

Bonhams



California Jewels

Los Angeles | September 10, 2019



California Jewels

Los Angeles | Tuesday September 10, 2019, at 10am

BONHAMS

7601 West Sunset Blvd,
Los Angeles, CA 90046
bonhams.com

SALE

Session 1: 10am-1pm
Lots 1-219
Session 2: 2pm-end,
Lots 220-475

PREVIEW

Los Angeles

Friday, September 6,
12pm to 5pm
Saturday, September 7,
12pm to 5pm
Sunday, September 8,
12pm to 5pm
Monday, September 9,
12pm to 5pm

SALE NUMBER:

25331

CATALOG:

\$35.00

ILLUSTRATIONS

Front cover: Lot 475
Back cover: Lot 86
Inside front cover: Lot 158
Inside back cover: Lot 141

BIDS

+1 (323) 850 7500
+1 (323) 850 6090 fax
Email: bids.us@bonhams.com
To bid via the internet please visit
www.bonhams.com

Telephone bidding

Bidding by telephone will only
be accepted on a lot with a low
estimate in excess of \$1000.

Please note that bids should be
submitted no later than 4pm on
the day prior to the sale. New
bidders must also provide proof
of identity when submitting bids.
Failure to do this may result in your
bid not being processed.

Live online bidding is available for this sale

Please email bids@bonhams.com
with 'live bidding' in the subject
line 48 hours before the auction
to register for this service.

INQUIRIES

Los Angeles

Emily Waterfall,
Specialist
Augustus Poppleton, GJG
Cataloguer
Alexandra Schettini,
alexandra.schettini@bonhams.com
+1 (323) 436 5508

New York

Brett O'Connor, Senior
International Jewelry Director
Caroline Morrissey,
Head of Sales, US Jewelry
Leslie Roskind
Senior Specialist
Stephanie Ibonnet
Ophelia Lai
+1 (212) 461 6519

San Francisco

Shannon Beck, GG
Senior Specialist
+1 (415) 503 3306

Jean Ghika, FGA
Global Head of Jewelry
jean.ghika@bonhams.com
+44 207 468 8282

CLIENT SERVICES

Monday to Friday 9am to 5pm
+1 (323) 850 7500
+1 (323) 850 6090 Fax

Please see pages 140 to 143 for
bidder information including
Conditions of Sale, after-sale
collection and shipment.

Please note that irrespective
of origin, jadeite and rubies (and
any jewelry pieces that contain
them) may now be imported into
the United States.

REGISTRATION IMPORTANT NOTICE

Please note that all customers,
irrespective of any previous activity
with Bonhams, are required to
complete the Bidder Registration
Form in advance of the sale. The
form can be found at the back
of every catalogue and on our
website at www.bonhams.com
and should be returned by email or
post to the specialist department
or to the bids department at
bids.us@bonhams.com

To bid live online and / or
leave internet bids please go to
www.bonhams.com/auctions/25331
and click on the Register to bid link
at the top left of the page.

IMPORTANT NAMES & NOTICES

DIAMONDS, COLORED STONES & PEARLS

The Jewelry department of Bonhams & Butterfields recognizes that there are many various forms of treatments and enhancements used in diamonds and colored stones in order to improve their appearance and or color. Techniques such as heat treatment have been used to improve the color and transparency of both sapphires and rubies in addition to other gemstones. Techniques such as oiling have been used to enhance the clarity of emeralds while dying has been used to effect the color of jade. Techniques such as heat treatment, oiling, resin impregnation, irradiation, color diffusion, dying, fracture filling, and HTHP are just a few off the techniques that are in use today. Prospective buyers are therefore reminded that unless otherwise noted in our catalog description it must be assumed that some form of enhancement may have been used and that such treatment may not always be permanent or detectable and that our estimates have taken such possibilities into account. As a matter of policy, Bonhams & Butterfields endeavors to obtain certificates from recognized gemological laboratories when such certificates are deemed crucial to the authenticity of a gemstone. It is not possible however to gain certificates for all items offered for sale and it is therefore recommended where there is no mention of a certificate that all prospective buyers consult with one of our department specialists prior to purchase of such items.

PLEASE NOTE: A number of laboratories issue certificates that give more detailed descriptions of gemstones, however there may not be consensus between different laboratories on the degrees, or types of treatment for any particular gemstone. Neither is there necessarily consensus between different laboratories, or private appraisers, on the grading of diamonds. All gemstone weights are approximations only and although an independent laboratory grading may be used in the catalog text, we cannot guarantee such gradings.

Images shown may appear smaller or larger than actual size.

Although we endeavor to mention in our descriptions significant defects, needed repairs, absent stones and the like, **WE DO NOT GUARANTEE THAT THE DESCRIPTIONS ARE COMPREHENSIVE.** Please examine all lots carefully. It is the responsibility of the prospective bidder, or his agent, to determine the condition of lots during the preview. Condition reports have been created for most lots in this auction, and are available upon request. Please contact the Jewelry department at least two days prior to the sale date for additional information.

It is the responsibility of the buyer to investigate any applicable restrictions on purchased property and to obtain any export or import licenses and/or certificates as well as any other required documentation before shipping. The buyer's inability to export or import any such items or to do so timely shall not serve as the basis for any cancellation or rescission of the sale or any delay in payment. Prospective buyers who are uncertain as to whether a lot is subject to these restrictions or any other restrictions on importation or exportation are advised to consult with the specialist department in which the property is offered.

REGULATED SPECIES MATERIALS AND CITES PERMITS

The export of a lot from the United States or import into certain countries may be subject to export or import regulations, licensure and/or other restrictions; in particular, lots containing plant or animal materials such as ivory, rhinoceros horn, tortoiseshell, coral, whalebone or certain types of woods, irrespective of age or value, may require the granting of one or more export or import licenses or certificates, or may be banned from import altogether by some countries. Moreover, the ability to obtain an export license or certificate does not insure the ability to obtain an import license or certificate in another country. Lots that contain such regulated species materials may also not be eligible for exportation or for re-importation into the United States if they are not at least 100 years of age, and, under current law, lots containing African Elephant Ivory may no longer be re-imported into the United States regardless of age. In addition, resales of lots containing certain regulated species materials may be subject to restrictions in some jurisdictions.

Lots noted in the catalog with a **Y** next to the lot number contain one or more such regulated plant or animal materials. **It is the buyer's responsibility to investigate any such restrictions and to obtain any relevant export or import licenses. Please note that this process is governed by local authorities and may take considerable time. Regardless of any delay in the obtaining of an export or import license or certificate or denial of a license's or certificate's issuance, purchased lots shall be paid for in accordance with the Conditions of Sale, and any such delay or denial shall not serve as the basis for cancellation of any sale.** Prospective buyers are advised to obtain information from the relevant regulatory authorities regarding export and import restrictions, requirements, and costs prior to bidding.

Prospective buyers should also check with their local (e.g. state) regulatory authorities regarding any local restrictions and/or permit requirements that may apply with respect to purchases of regulated species materials, including without limitation purchases of items containing elephant ivory or rhino horn. For example, we are advised that New York buyers of any lot containing elephant or mammoth ivory or rhino horn will be responsible for obtaining a New York State permit before taking possession of the lot within New York State, and that the State of New Jersey has banned the import of items containing elephant or marine mammal ivory or rhino horn into that state.

Upon request, Bonhams can refer the purchaser to a third party agent to assist the purchaser in attempting to obtain the appropriate licenses and/or certificates. However, there is no assurance that any necessary licenses or certificates can be obtained. Please contact the Specialist Department for a suggested list of shipping agents prior to placing a bid if you are uncertain as to whether a lot is subject to export/import license or certificate requirements or related restrictions.

WATCHES

Although we endeavor to mention in our descriptions significant defects, needed repairs, absent stones and the like, **WE DO NOT GUARANTEE THAT THE DESCRIPTIONS ARE COMPREHENSIVE.** Please examine all watches carefully. It is the responsibility of the prospective bidder, or his agent, to determine the condition of watches during the preview. Except as expressly set forth in the Conditions of Sale, all watches are sold "as is". We do not guarantee the accuracy or operation of any watch function such as timekeeping, chronograph, calendar, repeater or register.

We make no judgments as to whether diamond dials or diamond bezels originated at the factory or are later additions.

INDEX

INCLUDING PROPERTY FROM

NAME	LOT NUMBER	
Baume & Mercier	99	Property from a Delaware Estate
Buccellati	414	Property from a La Jolla, California Collector
Bvlgari	111, 171, 259, 267, 398, 412	Property from a La Jolla, California Estate
Cartier	13A, 28, 31, 58, 61, 93, 113, 117, 118, 172, 193, 275, 410	Property from a Long Island, New York Estate
Chanel	244, 418	Property from a New Mexico Estate
Chopard	313, 403	Property from a New York Estate
Christian Dior	75	Property from a Pasadena Estate
David Webb	11	Property from a San Diego, California Estate
David Yurman	95, 187	Property from a Southern California Estate
Denise Roberge	25, 27, 256	Property from an Arizona Collection
E. Gubelin	145	Property from an Estate of a Los Angeles Lady
Earl Pardon	470	Property from the Collection of Britt Ekland
Franck Muller	59	Property from the Collection of The Davis Family
Gubelin	202	Property from the Estate of a Beverly Hills Lady
Gucci	18	Property from the Estate of Joseph Schildkraut
Gurhan	162, 165, 166	Property from Total Courage INC
Hamilton	335, 357	Property of a Calabasas, California Collector
Hammerman Brothers	276	Property of a Hollywood Hills, California Collector
Hermès	188, 424	Property of a Lady
J.E. Caldwell & Co.	348	Property of a Los Angeles Collector
Kutchinsky	23	Property of a Los Angeles Lady
Lacloche Frères	338	Property of a Private Collector
Lalaounis	457, 468, 466, 469	Property of a Thousand Oaks, California Collector
Magerit	430	Property of an English Lady
Marina B.	39	Property of the Mulholland Family
Mauboussin	108	
Movado	146	
Nouvelle Bague	88, 89	
Oscar Heyman Brothers	33, 247, 272, 404	
Patek Philippe	240	
Paul Flato	177	
Piaget	40	
Pomellato	244, 389, 393	
Rolex	278, 405, 455	
Stephen Webster	49, 425	
Tambetti	178, 203, 407	
Tiffany & Co.	26, 43, 63, 64, 66, 101, 110, 254, 270, 284, 286, 323, 334, 413, 415, 433, 439, 456, 471	
Trianon	92	
Vacheron & Constantin	173	
Van Cleef	472	
Van Cleef & Arpels	274, 277, 280	
Versace	97	
Zolotas	1, 475	



269

Session One

Lots 1-219





1

2



3



4



1
A GOLD COLLAR, ZOLOTAS
*18k bi-color gold; weighing approximately:
 104 grams; length: 12 1/2in.; signed Zolotas*
\$3,500 - 4,500

2
**A PAIR OF GEM-SET AND DIAMOND
 PENDANT EARRINGS**
mounted in 18k gold; length: 2 1/4in.
\$1,500 - 2,000

3
A GROUP OF THREE GEM-SET RINGS
mounted in 18k gold; sizes: 6 1/2 and 7
\$1,800 - 2,500

4
AN AQUAMARINE AND DIAMOND RING
*centering an oval mixed-cut aquamarine
 approximately: 28.00 x 21.00 x 14.84mm;
 mounted in 18k gold; size: 7 3/4*
\$3,500 - 4,500

PROPERTY OF A PRIVATE COLLECTOR
 5
**A DIAMOND BRACELET WITH A PAIR OF
 DIAMOND EAR CLIPS**
*bracelet mounted in 18k gold; ear clips
 mounted in 14k gold; estimated total
 diamond weight: 6.40cts; bracelet length:
 7in.; ear clip length: 1in.*
\$2,200 - 4,200

6^Y
A CORAL AND DIAMOND BRACELET
*mounted in 18k gold; length: 7in.; width: 1
 5/8in.*
\$9,000 - 12,000

7
A RUBY AND DIAMOND RING
*centering an oval brilliant-cut ruby measuring:
 7.08 x 5.27 x 3.05mm; mounted in 18k gold;
 size: 8*
\$2,500 - 3,500

8
A PAIR OF GEM-SET EAR CLIPS
mounted in 18k gold; diameter: 1in.
\$1,500 - 2,000



9

9
**A DIAMOND, RUBY AND SODALITE
HORSE PENDANT, ITALIAN**

*mounted in 18k gold; diameter: 2 1/2in.; with
Italian assay marks*

\$1,200 - 1,500
To be sold without reserve



10

10
**A GOLD NECKLACE AND BRACELET
SET**

*14k gold; weighing approximately: 66 grams;
necklace length: 16 1/2in.; bracelet length:
7 1/2in.*

\$1,000 - 1,500



11

11
**A PAIR OF ENAMEL CUFFLINKS, DAVID
WEBB**

*mounted in 18k gold; dimensions: 1 x 5/8in.;
signed David Webb*

\$2,500 - 3,500



12



13



13A



15



14

12

A DIAMOND AND RUBY HIPPOPOTAMUS BROOCH

mounted in 18k gold; gross weight approximately: 27 grams; dimensions: 1 7/8 x 1 1/4in.

\$800 - 1,000
To be sold without reserve

PROPERTY FROM THE ESTATE OF A BEVERLY HILLS LADY, LOTS 13 AND 13A

13

A DIAMOND RING

mounted in 18k gold; estimated total diamond weight: 2.95cts; size: 6 3/4

\$1,000 - 1,500

13A

A DIAMOND BAND, CARTIER, PARIS, FRENCH

mounted in 18k gold and platinum; size: 4 3/4; signed Cartier, no. 97180; with French assay marks

\$1,800 - 2,200

PROPERTY FROM A NEW YORK ESTATE

14

A RUBY AND EMERALD TURTLE CLIP

mounted in 14k gold; dimensions: 1 3/4 x 1 1/4in.

\$1,200 - 1,800
To be sold without reserve

PROPERTY FROM THE COLLECTION OF THE DAVIS FAMILY

15

A PAIR OF GOLD HINGED BANGLES

18k gold; weighing approximately: 91 grams; diameter: 2 1/4in.

\$2,500 - 3,500



16

16

AN EMERALD AND DIAMOND RING

centering a cut-cornered square step-cut emerald approximately: 6.84 x 6.65 x 5.45mm; mounted in 18k gold; size: 4 1/4

\$2,000 - 3,000

17

A LAPIS LAZULI, GREEN TOURMALINE AND DIAMOND OWL BROOCH

mounted in 18k gold; dimensions: 2 1/4 x 1 1/2in.

\$2,000 - 2,500



17

18

PROPERTY OF A LADY

18

AN ENAMEL COLLAR, GUCCI, ITALIAN, CIRCA 1970

mounted in 18k gold; 99 grams; length: 17in.; signed Gucci, Italy

\$2,000 - 3,000

19

A PAIR OF DIAMOND EAR CLIPS

mounted in 18k gold; estimated total diamond weight: 1.00ct; ear clip length: 1in.

\$1,000 - 1,500



19



20



21



22



23

20
A DEMANTOID GARNET AND DIAMOND RING

centering two oval brilliant-cut demantoid garnets weighing: 0.89ct and 1.34cts; mounted in 18k bi-color gold; size: 9

\$1,500 - 2,000

Accompanied by GIA report #5201340368, dated June 4, 2019, stating the demantoid garnet as: natural, yellowish green color.

Accompanied by GIA report #2203340358, dated June 4, 2019, stating the demantoid garnet as: natural, yellowish green color.

21
AN ENAMEL AND DIAMOND HINGED BANGLE

mounted in 18k bi-color gold; estimated total diamond weight: 1.00ct; gross weight approximately: 90 grams; diameter: 2 1/4in.

\$2,500 - 3,500

22
TWO DIAMOND RINGS
mounted in 18k gold; sizes: 5

\$1,200 - 1,800
To be sold without reserve

23
A DIAMOND INTEGRAL BRACELET WRISTWATCH, KUTCHINSKY FOR DELANEAU

quartz movement; mounted in 18k gold; gross weight approximately: 86 grams; diameter: 37mm; length: 6 3/4in.; case signed Kutchinsky, dial signed DeLaneau

\$1,500 - 2,000



24

26

25

24

A DIAMOND AND GEM-SET RING WITH A GREEN TOURMALINE RING

mounted in 14k and 18k gold; gross weight approximately: 26 grams; sizes: 6 and 7

\$1,200 - 1,800
To be sold without reserve

25

A GEM-SET PENDANT AND CULTURED PEARL TORSADE NECKLACE, DENISE ROBERGE

mounted in 18k gold; length: 14in.; pendant dimensions: 2 1/4 x 1 3/4in.; signed Denise Roberge

\$3,000 - 5,000

26

A DIAMOND BAND WITH A RUBY BAND, TIFFANY & CO.

mounted in 18k gold and platinum; size: 4 1/2 and 4; signed T & Co. and Tiffany & Co.

\$1,200 - 1,800
To be sold without reserve

27

A JADEITE AND DIAMOND PENDANT, DENISE ROBERGE

mounted in 18k gold; gross weight approximately: 67 grams; dimensions: 2 3/4 x 1 3/4in.; signed D.R. and Roberge

\$3,000 - 5,000

Accompanied by Mason Kay report #190611-6711, dated June 11, 2019, stating: Natural Jadeite Jade-No Dye or Impregnation Detected-'A' Jade.



27



28



29



30

**PROPERTY OF A HOLLYWOOD HILLS,
CALIFORNIA COLLECTOR**

27
**A DIAMOND AND GEM-SET RING,
CARTIER, FRENCH, 1994**
*mounted in 18k gold; size: 6 1/4; signed
Cartier, 1994, no. C88173; with French assay
marks*

\$2,500 - 3,500

**PROPERTY OF A THOUSAND OAKS,
CALIFORNIA COLLECTOR**

28
A JADEITE BEAD NECKLACE
mounted in 14k gold; length: 21in.

\$2,000 - 3,000

Accompanied by Mason Kay report
#190729-5734, dated July 29, 2019, stating:
Natural Jadeite Jade-No Dye or Impregnation
detected-'A' Jade.

**PROPERTY FROM THE COLLECTION OF
THE DAVIS FAMILY**

29
TWO PAIRS OF GOLD EAR CLIPS
*18k gold; weighing approximately: 47 grams;
lengths: 1 1/8in. and 1 1/8in.; one signed
Henry Dunay, one signed R. Stone*

\$2,000 - 3,000



31

34

33

32

31
A SET OF TWO DIAMOND AND GOLD 'NOUVELLE VAGUE' RINGS, CARTIER, FRENCH, 1999

mounted in 18k gold; estimated total diamond weight: 1.10cts; gross weight approximately: 28 grams; signed Cartier, 1999, no. J02580 and no. N63810; with French assay marks; with two signed boxes

\$3,000 - 5,000

32
A DIAMOND BRACELET

mounted in 18k bi-color gold; estimated total diamond weight: 1.00ct; gross weight approximately: 58 grams; length: 7in.

\$1,200 - 1,800

33
A SAPPHIRE AND DIAMOND BRACELET, OSCAR HEYMAN & BROTHERS

with extra link and four sapphires; mounted in 18k gold; estimated total diamond weight: 3.00cts; length: 6 1/2in.; with maker's mark; no. 34542

\$3,000 - 5,000

34
A DIAMOND CLIP

centering a round brilliant-cut diamond approximately: 2.10cts; mounted in platinum and 18k gold; estimated total remaining diamond weight: 5.50cts; dimensions: 2 1/4 x 1 1/2in.

\$6,000 - 8,000



35

35

AN EMERALD AND DIAMOND PENDANT WITH GOLD CHAIN

centering a pear mixed-cut emerald approximately: 11.70 x 8.83 x 5.52mm; mounted in gold plated 18k white gold; 18k bi-color gold chain; estimated total diamond weight: 1.40cts; pendant dimensions: 1 1/4 x 5/8in.; chain length: 14in.

\$2,500 - 3,500

PROPERTY FROM THE COLLECTION OF THE DAVIS FAMILY

36

A COLLECTION OF THREE DIAMOND AND RUBY FLY BROOCHES, ROSENTHAL

mounted in 18k bi-color gold; estimated total diamond weight: 5.50cts; gross weight approximately: 29 grams; dimensions: 1 1/4 x 1 5/8in., 1 x 1 3/8in. and 3/4 x 1in.; with maker's marks

\$3,000 - 5,000



36



37

37

A DIAMOND RING

centering a round brilliant-cut diamond weighing: 2.46cts; mounted in 14k gold; size: 7

\$10,000 - 15,000

Accompanied by GIA report #110110272626, dated February 25, 2019, stating the diamond as: F color, SI2 clarity.

38

A KUNZITE AND DIAMOND PENDANT

centering a cushion mixed-cut kunzite weighing: 55.60cts; mounted in 18k bi-color gold; dimensions: 2 3/8 x 1 3/8in.

\$3,000 - 5,000



38



39



40



41

39

**A PAIR OF GEM-SET EAR CLIPS,
MARINA B**

*mounted in 18k gold; dimensions: 1 x 7/8in;
signed Marina B*

\$3,000 - 5,000

40

**A DIAMOND PENDANT NECKLACE,
PIAGET, 1996**

*mounted in 18k gold; gross weight
approximately: 36 grams; pendant
dimensions: 2 x 1 1/8in.; chain length: 24in.;
signed Piaget, no. A67327*

\$2,000 - 3,000

41

**A ROSE QUARTZ, PINK SAPPHIRE,
DIAMOND AND WHITE ENAMEL
BRACELET, ATTRIBUTED TO NOUVELLE
BAGUE**

*mounted in 18k rose gold; estimated total
diamond weight: 3.30cts; length: 7 1/2in.;
unsigned with Italian marks*

\$3,800 - 5,800



42



44



43

42

A SET OF COLORED CULTURED PEARL RINGS, MIMI MILANO

pearls approximately: 3.5 to 6.5mm; mounted in 18k gold and 18k rose gold; sizes: 7 and 7 1/4; with maker's marks; with two signed boxes (pearls untested for origin of color)

\$2,500 - 3,500

43

A GOLD NECKLACE, TIFFANY & CO., ITALIAN

18k gold; weighing approximately: 128 grams; length: 16in.; signed Tiffany & Co., Italy

\$4,000 - 6,000

44

A COLORED DIAMOND RING

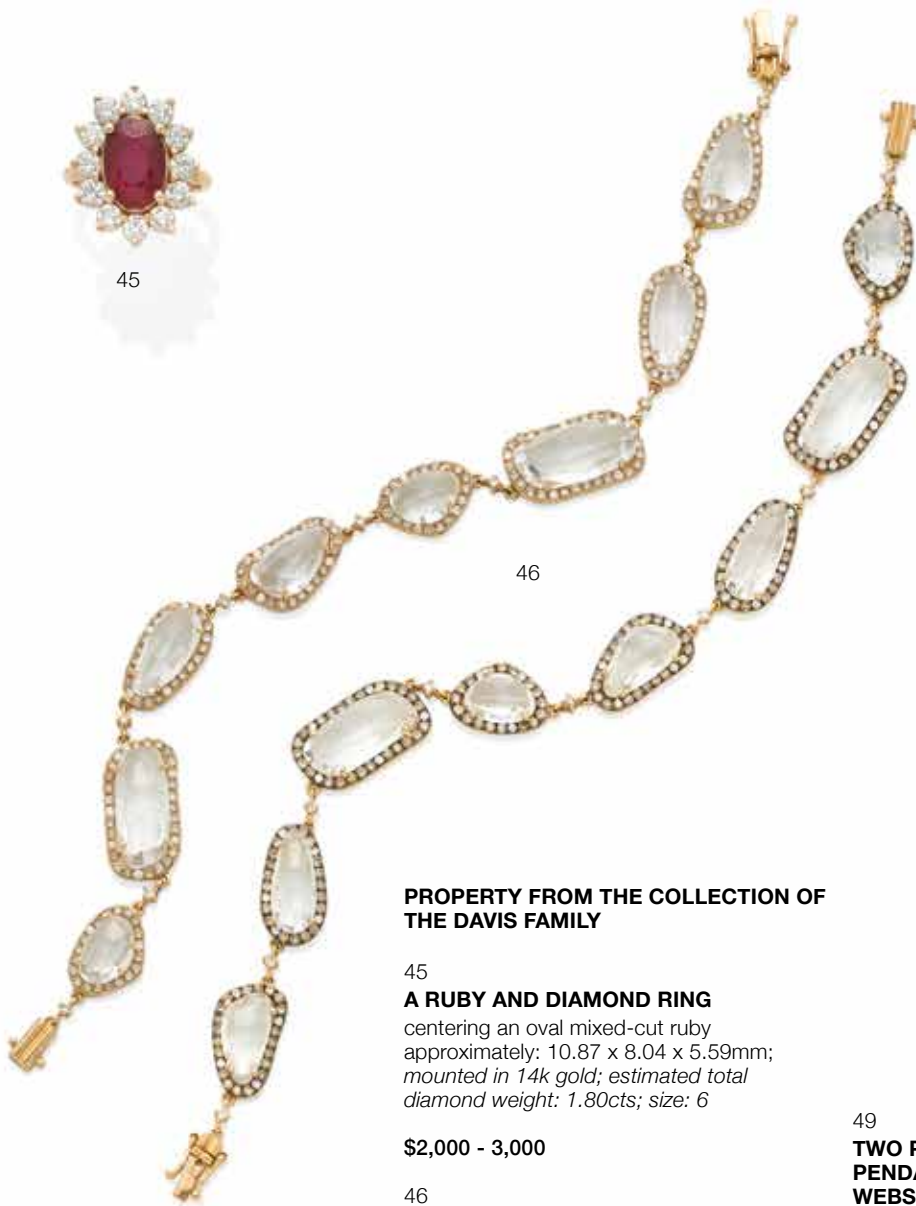
mounted in 14k gold and rhodium plated 18k gold; estimated total diamond weight: 1.70cts; size: 6 (yellow, pink, brown and blue diamonds untested for origin of color)

\$1,000 - 1,500

To be sold without reserve



45



46



47

PROPERTY FROM THE COLLECTION OF THE DAVIS FAMILY

45

A RUBY AND DIAMOND RING

centering an oval mixed-cut ruby approximately: 10.87 x 8.04 x 5.59mm; mounted in 14k gold; estimated total diamond weight: 1.80cts; size: 6

\$2,000 - 3,000

46

A PAIR OF COLORED DIAMOND AND TOPAZ BRACELETS

mounted in 18k bi-color gold; estimated total diamond weight: 4.55cts; lengths: 7 1/2in.

\$1,500 - 2,500

47

A DIAMOND NECKLACE

mounted in 18k rose gold; estimated total diamond weight: 4.35cts; length: 18 1/4in.

\$1,800 - 2,200

48

A DIAMOND RING, PALMIERO

mounted in 18k rose gold; estimated total diamond weight: 13.10cts; size: 7 1/4; signed Palmiero

\$10,000 - 15,000

49

TWO PAIRS OF DIAMOND 'DECO' PENDANT EARRINGS, STEPHEN WEBSTER

mounted in 18k rose gold; estimated total diamond weight: 1.40cts; lengths: 1 1/4in. and 1in.; signed SW with English hallmarks

\$1,800 - 2,500

50

DIAMOND NECKLACE

mounted in 18k bi-color gold; estimated total diamond weight: 0.30ct.; gross weight approximately: 30 grams; length: 20 1/4

\$1,000 - 1,500

51

A DIAMOND COIL BRACELET

mounted in 18k rose gold; estimated total diamonds weight: 3.95cts; gross weight approximately: 46 grams; diameter: 2 1/2in.

\$2,000 - 3,000

48



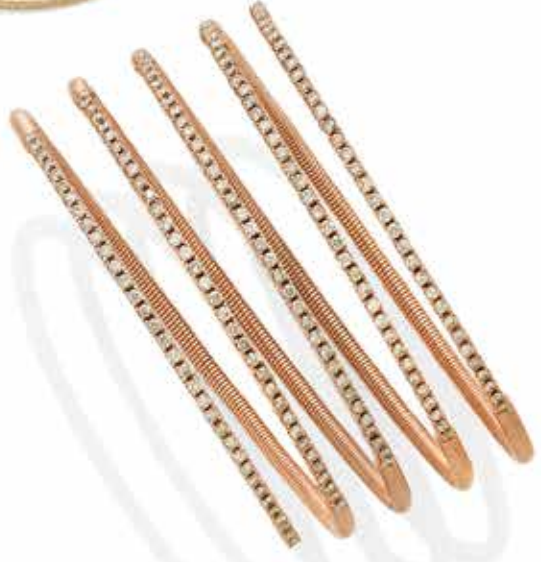
49



50



51





55



56

52

A DIAMOND RING SET

centering an emerald-cut diamond approximately: 2.65cts; mounted in platinum; size: 4 1/2 (with sizing beads)

\$6,000 - 8,000

PROPERTY OF A HOLLYWOOD HILLS, CALIFORNIA COLLECTOR

53

A SAPPHIRE AND DIAMOND RING

mounted in palladium; estimated total diamond weight: 1.25cts; size: 6 1/2 (with sizing spring)

\$1,200 - 1,500

54

A DIAMOND RIVIÈRE NECKLACE

mounted in 18k white gold; estimated total diamond weight: 15.00cts; gross weight approximately: 29 grams; length: 15 3/4in.

\$8,000 - 10,000

55

A PAIR OF DIAMOND EAR CLIPS

mounted in platinum and 14k white gold; estimated total diamond weight: 5.25cts; dimensions: 1 x 3/4in.

\$3,000 - 5,000

PROPERTY FROM A NEW YORK ESTATE

56

A DIAMOND PENDANT/BROOCH

mounted in 18k white gold; estimated total diamond weight: 2.90cts; diameter: 1 3/4in.

\$1,200 - 1,800

To be sold without reserve



57



58



59



60



61

57

A DIAMOND SALAMANDER RING

mounted in 18k white gold; estimated total diamond weight: 2.80cts; size: 7

\$1,200 - 1,500

58

A DIAMOND RING, CARTIER, FRENCH

mounted in 18k white gold; signed Cartier, no. 936691; with French assay and maker's marks

\$2,500 - 3,500

59

A DIAMOND 'LONG ISLAND' WRISTWATCH, FRANCK MULLER

quartz movement; mounted in 18k white gold; estimated total diamond weight 1.30cts; total weight approximately: 47 grams; case width: 24mm; case, dial, and movement signed, no. 53, 900 QZ D

\$5,500 - 6,500

60

A TANZANITE AND DIAMOND RING

centering a cushion mixed-cut tanzanite approximately: 8.23 x 8.34mm; mounted in rhodium plated 18k white gold; size: 6 1/2

\$1,000 - 1,500

To be sold without reserve

61

A DIAMOND 'LOVE' BANGLE, CARTIER, 1998

mounted in 18k white gold; gross weight approximately: 29 grams; diameter: 2 1/8in. (size 16); signed Cartier, 1998, no. K95353; with original screw driver and signed box

\$6,000 - 8,000



62



63



64



65



66



62

A DIAMOND RING

centering an emerald-cut diamond weighing: 2.39cts; mounted in platinum; size: 4 1/2 (with sizing beads)

\$6,500 - 8,500

Accompanied by GIA report #11908321, dated June 20, 2019, stating the 2.39ct diamond as: I color, VVS1 clarity.

63

A COLORED DIAMOND AND DIAMOND RING, TIFFANY & CO.

mounted in 18k gold and platinum; size: 6 1/4; signed Tiffany & Co., no. 32931804 (yellow diamonds untested for origin of color)

\$4,000 - 6,000

64

A COLORED DIAMOND AND DIAMOND PENDANT, TIFFANY & CO.

mounted in 18k gold and platinum; length: 16in.; signed Tiffany & Co. (yellow diamond untested for origin of color)

\$5,000 - 7,000

65

A PAIR OF DIAMOND PENDANT EARRINGS

mounted in 18k white gold; estimated total diamond weight: 21.50cts; length: 2 1/2in.

\$25,000 - 30,000

66

A PAIR OF COLORED DIAMOND AND DIAMOND PENDANT EARRINGS, TIFFANY & CO.

mounted in 18k gold and platinum; estimated total diamond weight: 1.85cts; length: 7/8in.; signed T&Co., no. 31756626 (yellow diamonds untested for origin of color)

\$7,000 - 9,000





67



71



68



69

70



72



73



75



74

67

A PAIR OF CULTURED PEARL, RUBELLITE AND COLORED DIAMOND PENDANT EARRINGS

mounted in 18k white gold; length: 2in. (brown diamonds untested for origin of color)

\$1,800 - 2,000

68

AN AQUAMARINE AND DIAMOND RING

centering a cut-cornered rectangular mixed-cut aquamarine approximately: 23.27 x 13.84 x 8.74mm; mounted in platinum; size: 7

\$2,500 - 3,500

69

DIAMOND HOOP EARRINGS

mounted in 14k white gold; estimated total diamond weight: 2.65cts; length: 1 1/2in.

\$1,000 - 1,500

70

A DIAMOND CHAIN

mounted in 18k white gold; total diamond weight: 34.50cts; gross weight approximately: 35 grams; length: 76in.

\$10,000 - 12,000

71

A RUBELLITE, GREEN TOURMALINE AND DIAMOND PENDANT NECKLACE

mounted in 14k white gold; 14k white gold chain; length: 2 1/8in.; chain length: 18in.

\$2,000 - 3,000

72

A BI-COLOR TOURMALINE AND DIAMOND RING

mounted in 18k white gold; size: 6 3/4

\$1,500 - 2,000

73

A DIAMOND CURB LINK NECKLACE

mounted in 14k white gold; gross weight approximately: 90 grams; estimated total diamond weight: 19.00cts; length: 18in

\$6,500 - 7,500

74

A DIAMOND BRACELET

mounted in 14k white gold; estimated total diamond weight: 4.60cts; gross weight approximately: 37 grams; length: 7 1/4in.

\$2,800 - 3,200

75

AN AQUAMARINE AND DIAMOND 'SULTANE' RING, CHRISTIAN DIOR, FRENCH

centering an oval cabochon aquamarine approximately: 14.95 x 11.17 x 7.18mm; mounted in 18k gold; estimated total diamond weight: 1.50cts; size: 6 1/2; signed DIOR, no.H1877; with French assay and workshop mark; with signed box

\$3,000 - 5,000



76

**76
A PINK TOURMALINE, GREEN
TOURMALINE AND DIAMOND RING**

centering an oval brilliant-cut pink tourmaline
approximately: 13.53 x 10.76 x 6.73mm;
mounted in rhodium plated 18k white gold;
size: 4 1/2 (with sizing beads)

\$3,000 - 5,000

77

**77
A PAIR OF RUBELLITE AND DIAMOND
PENDANT EARRINGS**

mounted in rhodium plated 18k white gold;
estimated total diamond weight: 1.80cts;
length: 2in.

\$3,000 - 5,000

78

**78
A RUBELLITE, GREEN TOURMALINE
AND DIAMOND NECKLACE**

mounted in 18k white gold; estimated total
diamond weight: 5.45cts; gross weight
approximately: 63 grams; length: 16in.

\$5,000 - 7,000



79



81



80



82

**PROPERTY OF A THOUSAND OAKS,
CALIFORNIA COLLECTOR**

79

**A COLLECTION OF DIAMOND AND
GEM-SET JEWELRY**

comprising a ring, pair of earrings and
a brooch; *mounted in 18k white gold;*
estimated total diamond weight: 3.40cts;
brooch dimensions: 1 11/16 x 1 1/4in.;
earring length: 1 1/4in.; ring size: 6 1/2

\$1,500 - 2,000

To be sold without reserve

80

A DIAMOND HINGED BANGLE

*mounted in 18k white gold; estimated total
diamond weight: 7.00cts; gross weight
approximately: 29 grams; diameter: 2 1/4in.;*
width: 7/8in.

\$2,800 - 3,000

81

A DIAMOND RING

*mounted in 18k white gold; estimated total
diamond weight: 3.50cts; size: 7 1/2*

\$1,800 - 2,200

82

**A GREEN TOURMALINE AND DIAMOND
RING**

centering a rectangular step-cut green
tourmaline weighing: 11.65cts; *mounted in
platinum; size: 8 1/4*

\$1,250 - 1,750



83



**PROPERTY OF A THOUSAND OAKS,
CALIFORNIA COLLECTOR**

83

**A CULTURED PEARL AND DIAMOND
SUITE, ATTRIBUTED TO MARSH & CO.**

pearls approximately: 4.5 to 9.2mm;
mounted in steel and 18k white gold; gross
weight approximately: 80 grams; necklace
length: 14in.; bracelet length: 7in.; ear clip
length: 1in.; ring size: 6; unsigned

\$2,500 - 3,500

84

**A PAIR OF PEARL, EMERALD, OPAL AND
DIAMOND PENDANT EARRINGS**

mounted in silver and 18k gold; length: 2
1/2in.

\$1,500 - 2,000
To be sold without reserve

85

**A GROUP OF CULTURED PEARL AND
DIAMOND JEWELRY**

comprising of a necklace, pendant, and a
pair of stud earrings; pearls approximately:
9.9 to 15.1mm; mounted in 18k white gold;
necklace length: 17in.; pendant length: 1
1/4in.; stud diameter: 1/4in. (black pearls
untested for origin of color)

\$1,800 - 2,200

86^Y

**A CONCH PEARL AND DIAMOND
PENDANT/BROOCH**

centering a conch pearl approximately:
11.9mm; mounted in black rhodium plated
18k gold; estimated total diamond weight:
10.00cts; dimensions: 2 1/4 x 2 3/5in.

\$6,000 - 8,000

87

**A PAIR OF TANZANITE AND COLORED
DIAMOND PENDANT EARRINGS**

mounted in silver and 18k gold; total
diamond weight: 6.60cts; length: 2 7/8in.
(brown diamonds untested for origin of color)

\$1,500 - 2,000
To be sold without reserve



84



85



86



87



89

90

88



92

91

93

88
A PAIR OF ENAMEL AND DIAMOND 'KENYA' HINGED BANGLES, NOUVELLE BAGUE

mounted in 18k gold; diameter: 2 1/2in.; signed Nouvelle Bague with Italian marks

\$2,500 - 3,500

89
A TURQUOISE, ENAMEL AND DIAMOND NECKLACE TOGETHER WITH AN ENAMEL AND DIAMOND RING, NOUVELLE BAGUE

mounted in 18k white gold; necklace length: 44in.; ring size: 7 1/2; signed with maker's mark

\$1,600 - 2,400

90 ^Y
A PAIR OF CORAL AND DIAMOND PENDANT EARRINGS

mounted in 18k gold; estimated total diamond weight: 2.20cts; length: 2 7/8in.

\$3,000 - 5,000

91 ^Y
A PAIR OF CORAL, BLACK ONYX AND DIAMOND EAR CLIPS

mounted in 14k gold; dimensions: 1 x 3/4in.

\$1,500 - 2,000

92
AN AGATE, SAPPHIRE AND DIAMOND TORSADE NECKLACE, TRIANON

agate beads approximately: 4mm; mounted in 18k gold; length: 17 3/4in.; with maker's mark

\$3,000 - 5,000

93
A COLLECTION OF THREE DIAMOND AND GOLD RINGS, CARTIER

mounted 18k white gold and 18k tri-color gold; sizes: 4 1/4, 5 1/2 and 7 1/4; signed Cartier, no.760787; signed Cartier, no. NJ3888; signed Cartier 1997, no. F86650

\$2,800 - 3,200



94

95

96

94

A DIAMOND PENDANT

mounted in 14k gold; estimated total diamond weight: 2.50cts; dimensions: 1 7/8 x 1/2in.

\$7,000 - 9,000

95

A DIAMOND RING, DAVID YURMAN

mounted in 18k gold; estimated total diamond weight: 1.25cts; size: 7; signed D.Y.

\$2,500 - 3,500

96^Y

A CORAL NECKLACE WITH A CORAL AND DIAMOND HINGED BANGLE

mounted in 14k gold; necklace length: 17in.; bangle diameter: 2 1/2in.

\$2,500 - 3,500



97



98



99

97

**A BLUE TOPAZ AND DIAMOND RING,
VERSACE, ITALIAN**

centering a rectangular mixed-cut blue topaz
approximately: 13.30 x 11.94 x 6.81mm;
mounted in 18k bi-color gold; size: 7 1/2;
signed Versace, with maker's mark

\$1,000 - 1,500

To be sold without reserve

98

A GOLD NECKLACE

mounted in 14k gold; weighing
approximately: 98 grams; length: 16 1/2in.

\$1,000 - 1,500

**PROPERTY FROM THE COLLECTION OF
THE DAVIS FAMILY**

99

**A DIAMOND BRACELET WRISTWATCH,
BAUME & MERCIER**

quartz movement, mother-of-pearl dial;
mounted in 18k gold; gross weight
approximately: 81 grams; width 20mm;
length: 6in.; case, dial, and movement
signed, stamped 4217885 and MV025206

\$3,000 - 5,000



100



103



101



102

100

A DIAMOND KINETIC RING

mounted in 18k gold; estimated total diamond weight: 1.75cts; size: 5

\$1,200 - 1,800

PROPERTY FROM THE COLLECTION OF THE DAVIS FAMILY

101 ^Y

A CORAL AND DIAMOND HINGED BANGLE, TIFFANY & CO.

mounted in 18k bi-color gold; estimated total diamond weight: 1.00ct; gross weight approximately: 48 grams; diameter: 2 1/4in.; signed Tiffany

\$3,000 - 5,000

102

A PAIR OF DIAMOND EAR CLIPS

mounted in 18k bi-color gold; estimated total diamond weight: 2.75cts; dimensions: 7/8 x 5/8in.

\$1,500 - 2,500

103 ^Y

A CORAL AND DIAMOND PENDANT ON CHAIN

centering a round coral bead approximately: 19.7mm; mounted in 18k gold; pendant length: 1 1/2in.; chain length: 18in.

\$1,500 - 2,000



104



105



106

A JADE PENDANT NECKLACE WITH A GOLD CHAIN

mounted in 18k gold, both chains 14k gold; pendant dimensions: 3 1/4 x 2 1/4in.; chain lengths: 24in. and 37in.

\$2,200 - 2,500



107

A JADEITE AND DIAMOND BROOCH

mounted in 14k gold; dimensions: 1 3/8 x 1 1/8in.

\$3,000 - 5,000

Accompanied by Mason Kay report #190611-4065, dated June 11, 2019, stating: Natural Jadeite Jade- No Dye or Impregnation Detected-'A' Jade.

104
A PAIR OF DIAMOND EAR CLIPS
mounted in 18k gold and platinum; estimated total diamond weight: 3.00cts; dimensions: 1 1/4 x 1in.

\$2,000 - 3,000

105
A DIAMOND RING
mounted in 18k bi-color gold; estimated total diamond weight: 2.00cts; size: 5

\$1,000 - 1,500



108

110

109



111



112

113

108

TWO DIAMOND 'DOUBLE ROW' RINGS, MAUBOUSSIN, PARIS

mounted in 18k gold; estimated total diamond weight: 2.20cts; sizes: 50 and 51; signed: Mauboussin Paris; numbered: A7398 and A9625

\$3,000 - 5,000

109

A DOUBLE STRAND OPAL NECKLACE

mounted in 14k gold; lengths: 23in. and 24in.

\$2,000 - 3,000

110

A GOLD BRACELET, BROOCH AND A PAIR OF EAR CLIPS, TIFFANY & CO.

mounted in 18k gold; gross weight approximately: 73 grams; bracelet length: 7in.; ear clip length: 3/4in.; brooch dimension: 2 1/2 x 1 1/2in.; signed Tiffany & Co.

\$3,000 - 5,000

111

A CITRINE AND PERIDOT RING, BVLGARI

mounted in 18k gold; size: 6; signed Bulgari, no. 14031

\$2,500 - 3,500

PROPERTY FROM A LA JOLLA, CALIFORNIA ESTATE

112

A CARVED JADEITE PENDANT NECKLACE

mounted in 18k gold; 14k gold chain; pendant length: 2 1/2in.; chain length: 28in.

\$1,500 - 2,000

See department for Mason Kay report.

113

A GOLD CLIP, CARTIER, PARIS

18k gold; dimensions: 2 x 1 1/4in.; signed Cartier, Paris, with French assay marks

\$1,000 - 1,500



114

**PROPERTY FROM THE COLLECTION OF
BRITT EKLAND, LOTS 114-118**

114
**A DIAMOND, BLACK ONYX, RUBY AND
 ENAMEL DOG CLIP, ITALIAN**
*mounted in 18k gold; dimensions: 1 1/2 x 1
 1/2in.; signed Italy*

\$1,000 - 1,500

115
A DIAMOND BRACELET
*mounted in 18k gold; estimated total
 diamond weight: 4.50cts; length: 7 1/2in.*

\$1,500 - 2,000

116
A GOLD NECKLACE
*22k gold; weighing approximately: 68 grams;
 length: 28in,*

\$1,200 - 1,500

117
**A VERMEIL BRACELET WRISTWATCH,
 CARTIER**
*quartz movement; width: 27mm.; dial and
 movement signed Must de Cartier and
 numbered 100239 and 690002*

\$1,000 - 1,500

Britt Ekland is a Swedish born actress and singer who appeared in many films from the 1960s and 1970s, including the British crime film *Get Carter*, the horror film *The Wicker Man* and most notably as a Bond Girl in *The Man with the Golden Gun*.



Britt Ekland, London, 1980



118



118
**A GOLD BAIGNOIRE WRISTWATCH
AND A GILT METAL DESK TIMEPIECE
CARTIER**

both with mechanical movements; watch gross weight approximately: 30 grams; width: 24mm; clock dimensions: 4 1/2 x 3 1/2 in.; watch with case and dial signed and numbered 780941955, clock with dial signed

\$1,800 - 2,200



119

120



121



122



123

119

A GEM-SET CHARM BRACELET

mounted in 14k gold; gross weight approximately: 67 grams; length: 7 1/4in.

\$1,000 - 1,500

To be sold without reserve

120

A GEM-SET CHARM NECKLACE

mounted in 14k gold; gross weight approximately: 131 grams; length: 20 1/4in.

\$2,500 - 3,500

121

A COLLECTION OF SIX GEM-SET BROOCHES

mounted in 14k and 18k gold; tennis dog dimensions: 1 1/2 x 1/2in.; cherub dog dimensions: 1 1/2 x 1/2in.; rabbit dimensions: 1 1/2 x 3/4in.; dog diameter: 1in.; small boat dimensions: 1 3/5 x 7/8in.; large boat dimensions: 2 1/4 x 2in.

\$1,000 - 1,500

To be sold without reserve

122

A GOLD BRACELET

14k gold; weighing approximately: 56 grams; length: 7 1/2in.

\$1,000 - 1,500

123

A PAIR OF LAPIS LAZULI EAR CLIPS

mounted in 18k gold; diameter: 3/4in.

\$800 - 1,000



124



125



126

PROPERTY FROM A DELAWARE ESTATE

124

**A SAPPHIRE AND DIAMOND CLIP,
CIRCA 1940**

mounted in 14k bi-color gold; estimated total diamond weight: 3.25cts; dimensions: 2 x 1 3/4in.

\$4,000 - 6,000

PROPERTY FROM THE COLLECTION OF
THE DAVIS FAMILY

125

A GOLD BRACELET

18k gold; weighing approximately: 146 grams; length: 8 1/4in.; width: 2 3/4in.

\$4,000 - 6,000

126

**AN AQUAMARINE AND SAPPHIRE
BROOCH**

centering a rectangular step-cut aquamarine approximately: 13.00 x 11.00 x 9.00mm; mounted in 14k gold; gross weight approximately: 26 grams; dimensions: 3 1/4 x 2 3/5in.

\$1,000 - 1,500

To be sold without reserve



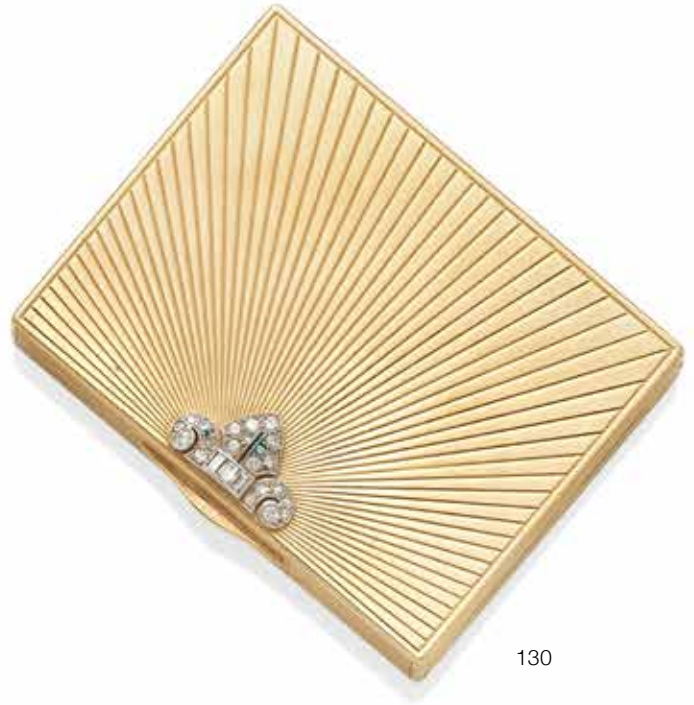
127



128



129



130

127

A DIAMOND CLIP, FRENCH, CIRCA 1940

mounted in 18k bi-color gold; estimated total diamond weight: 3.00cts; dimensions: 1 1/2 x 1 3/5in.; with French assay marks

\$2,500 - 3,500

PROPERTY FROM A LA JOLLA, CALIFORNIA ESTATE

128

A DIAMOND AND GEM-SET BROOCH

mounted in platinum and 14k rose gold; estimated total diamond weight: 2.45cts; gross weight approximately: 27 grams; dimensions: 2 3/4 x 1 1/2in.

\$2,000 - 3,000

PROPERTY FROM A NEW YORK ESTATE

129

A RUBY CLIP AND RING

mounted in 18k gold; clip dimensions: 1 x 3/4in.; ring size: 4

\$1,500 - 2,000

To be sold without reserve

130

A DIAMOND COMPACT, CIRCA 1945

14k gold; gross weight approximately: 96 grams; dimensions: 2 3/4 x 2 1/8in.; no. 6855, with maker's mark

\$2,000 - 3,000



131



132



133



131

A DIAMOND SPRAY BROOCH WITH PAIR OF DIAMOND EAR CLIPS

mounted in platinum and 18k gold; estimated total diamond weight: 5.25cts; gross weight approximately: 34 grams; brooch length: 2 1/4in.; ear clip length: 1in.

\$1,500 - 2,500

132

A DIAMOND PENDANT NECKLACE

centering a pear brilliant-cut diamond weighing: 3.60cts; mounted in platinum and 14k gold; length: 17in.

\$6,000 - 8,000

PROPERTY FROM A PASADENA ESTATE, LOTS 133-137

133

A GOLD NUGGET LINK CHAIN

14k gold chain; 22k gold nuggets; weighing approximately: 40 grams; length: 58in.

\$1,000 - 1,500

To be sold without reserve



134



135



136



137

134
**TWO GOLD BROOCHES TOGETHER
 WITH AN OPAL AND DIAMOND BROOCH**

*mounted in 14k gold and 14k rose gold;
 gross weight approximately: 23 grams;
 lengths: 1 1/4in., 2 1/8in. and 2 1/4in.*

\$800 - 1,000
 To be sold without reserve

136
**A DIAMOND AND SAPPHIRE
 WRISTWATCH WITH A DIAMOND
 WRISTWATCH**

*mechanical movements; platinum; movement
 signed A. LeCoultre; movement signed
 Mobile Watch Co.*

\$1,500 - 2,000
 To be sold without reserve

137
**AN OLD EUROPEAN DIAMOND RING,
 CIRCA 1910**

*centering an old european-cut diamond
 weighing 4.06cts; mounted in platinum; size:
 5 1/2*

\$12,000 - 15,000

135
**A SAPPHIRE AND DIAMOND RING,
 CIRCA 1925**

*mounted in platinum; estimated total
 diamond weight: 1.60cts; size: 3 1/2*

\$2,000 - 3,000



138



139



139





140



142



141



143

138

A GOLD MESH PURSE

14k gold; gross weight approximately: 169 grams; dimensions: 5 x 5 1/2in.

\$2,500 - 3,500

PROPERTY FROM A LA JOLLA, CALIFORNIA ESTATE

139

A GROUP OF AMETHYST AND DIAMOND JEWELRY

mounted in 14k gold; hinged bangle diameter: 2 1/4in.; necklace length: 15in.; ring sizes: 7 3/4 and 8

\$1,200 - 1,500

To be sold without reserve

140

A DIAMOND AND PEARL PENDANT/ BROOCH

pearls approximately: 2.9 to 3.4mm; mounted in silver-topped 14k gold; estimated total diamond weight: 2.40cts; dimensions: 1 1/4 x 1 1/4in.

\$1,200 - 1,800

PROPERTY FROM A NEW YORK ESTATE

141

A NEPHRITE JADE AND SAPPHIRE PENDANT, CIRCA 1890

mounted in 18k gold; dimensions: 1 1/4 x 1 1/4in.

\$3,000 - 5,000

Accompanied by Mason Kay Report dated July 29, 2019, stating: Natural Nephrite Jade.

142

A DIAMOND RING

centering a european-cut diamond approximately: 1.10cts; mounted in platinum and 14k gold; size: 4 1/4

\$2,000 - 3,000

ALL PROCEEDS TO BENEFIT THE SEATTLE CHILDREN'S HOSPITAL

143

A SAPPHIRE, PEARL AND ENAMEL PENDANT, CIRCA 1870

mounted in 18k gold; length: 3in.

\$1,500 - 2,000

Born in Vienna, Austria, Joseph Schildkraut was an Austrian-American Actor who was featured in many films from the 1920s to the 1960s and was most notably remembered for his performance as Captain Alfred Dreyfus in the film *The life of Emile Zola* where he won an Oscar. Schildkraut was also nominated for a Golden Globe for his performance as Otto Frank in the film *The Diary of Anne Frank* in 1959 and was given a star of the Hollywood Walk of Fame.



(Joseph Schildkraut)

PROPERTY FROM THE ESTATE OF JOSEPH SCHILDKRAUT, LOTS 144-150

144 Y

A GROUP OF CORAL AND DIAMOND JEWELRY

coral beads approximately: 4.4 to 9.79mm; mounted in 14k gold and 14k white gold; estimated total diamond weight: 1.70cts; necklace length: 17in.; ear clip dimensions: 7/8 x 1/2in.; ring size: 6 1/4; cufflink dimensions: 1 x 3/4in.; tie tack dimensions: 7/8 x 1/2in.

\$4,000 - 6,000



145



146



144



144





147



148



149



150

145
AN 18K GOLD OPENFACE POCKET WATCH, E. GUBELIN
 mechanical movement; case, dial, and movement signed, numbered 27994, case back engraved: "Joseph Schildkraut LR"; gross weight approximately: 42 grams; width: 42mm.

\$1,000 - 1,500

146
A 14K GOLD AND ENAMEL HUNTING CASE POCKET WATCH, MOVADO
 mechanical movement; case and dial signed, numbered 681975; gross weight approximately: 71 grams; width: 50mm.

\$1,000 - 1,500

147
AN AQUAMARINE AND DIAMOND RING, CIRCA 1935
 centering a cushion mixed-cut aquamarine approximately: 14.35 x 10.18 x 6.91mm; mounted in platinum; size: 7

\$1,500 - 2,000

148
A PAIR OF DIAMOND PENDANT EARRINGS
 mounted in platinum; estimated total diamond weight: 1 1/2cts; length: 1 1/4in.

\$1,000 - 1,500

149
A PEARL, RUBY AND DIAMOND NECKLACE
 pearls approximately: 2.4 to 5.6mm; mounted in platinum-topped gold; length: 21in.

\$1,000 - 1,500

Accompanied by GIA report #2205460124, dated August 6, 2019, stating the pearls as: Natural saltwater, Pinctada species.

150
A PAIR OF RUBY AND DIAMOND PENDANT EARRINGS
 mounted in 14k white gold; estimated total diamond weight: 2.70cts; length: 1 1/8in.

\$2,000 - 3,000



151



153



152



156



155



154



PROPERTY FROM AN ARIZONA COLLECTION, LOTS 151-169

151 ^Y
A PAIR OF CORAL AND DIAMOND DAY/NIGHT PENDANT EARRINGS

mounted in 18k white gold; estimated total diamond weight: 2.00cts; length: 2 1/2in.

\$1,800 - 2,200

152
A COLLECTION OF THREE DIAMOND CHAINS

mounted in 14k white gold; estimated total diamond weight: 19.80cts; lengths: 21 1/4in. and 22in.

\$5,000 - 7,000

153
A PAIR OF PEARL AND DIAMOND PENDANT EARRINGS

pearls approximately: 2.5 to 5.1mm; mounted in 18k white gold; estimated total diamond weight: 4.60cts; length: 2 3/5in.

\$3,000 - 5,000



157



158



161



159



160

154

A DIAMOND SPRAY CLIP

mounted in 18k white gold; estimated total diamond weight: 7.65cts; dimensions: 2 1/4 x 2 1/4in.

\$4,000 - 6,000

155

A TURQUOISE, SAPPHIRE AND DIAMOND CLIP TOGETHER WITH A PAIR OF TURQUOISE AND SAPPHIRE EAR CLIPS

mounted in 18k bi-color gold; estimated total diamond weight: 4.70cts; dimensions: 2 7/8 x 1 1/2in.

\$2,500 - 3,500

156

A PAIR OF DIAMOND PENDANT EARRINGS

mounted in platinum; estimated total diamond weight: 1.15cts; length: 1 5/8in.

\$1,800 - 2,200

157

A COLLECTION OF THREE RUBY, EMERALD AND DIAMOND ETERNITY BANDS

mounted in platinum; estimated total diamond weight: 4.30cts; sizes: 5 3/4 and 6

\$4,000 - 6,000

158

A RUBY AND DIAMOND DOUBLE CLIP/ CUFF, CIRCA 1940

mounted in 14k bi-color gold; gross weight approximately: 80 grams; clip dimensions: 1 1/2 x 1 1/2in.; cuff diameter: 2 1/2in.; with maker's marks, no. 2540

\$3,000 - 5,000

159

A PAIR OF TURQUOISE AND DIAMOND PENDANT EARRINGS

mounted in 18k gold; estimated total diamond weight: 3.95cts; length: 2 1/2in.

\$1,800 - 2,000

160^Y

A CORAL, LAPIS LAZULI AND DIAMOND BROOCH

mounted in 18k bi-color gold; estimated total diamond weight: 3.20cts; dimensions: 3 x 1 7/8in.

\$2,000 - 3,000

161

A DIAMOND BRACELET

mounted in 18k gold; estimated total diamond weight: 9.80cts; gross weight approximately: 47 grams; length: 7 1/4in.

\$4,000 - 6,000



162

162

163

164



165

166

162

A COLLECTION OF GEM-SET JEWELRY, GURHAN

comprising a pair of ruby and emerald pendant earrings, a ruby necklace and a ruby, emerald and sapphire necklace; mounted in 22k gold; gross weight approximately: 62 grams; earring length: 2in.; necklace lengths: 18in. and 50in.; signed Gurhan with maker's marks

\$1,500 - 2,000

163

A COLLECTION OF GOLD BANGLES

comprising eighteen bangles; 18k gold; weighing approximately: 100 grams; diameters: 2 3/5in.

\$2,000 - 3,000

164

AN ENAMEL, EMERALD AND DIAMOND SNAKE HINGED BANGLE

mounted in 18k gold; estimated total diamond weight: 1.10cts; diameter: 2 1/4in.

\$3,000 - 5,000

165

A GOLD NECKLACE AND HOOP EARRINGS SET, GURHAN

22k gold; weighing approximately: 37 grams; necklace length: 15in. to 18in.; earring length: 2 1/4in.; signed Gurhan, no. ET025, no. NF809

\$1,500 - 2,000

166

A PAIR OF SAPPHIRE EAR CLIPS TOGETHER WITH A PAIR OF GOLD PENDANT EARRINGS, GURHAN

mounted in 22k gold; gross weight approximately: 27 grams; signed Gurhan with maker's marks, no. EA22018, no. ET065

\$1,500 - 2,000



167

167

A GOLD NECKLACE

18k gold; weighing approximately: 124 grams; length: 16in.

\$3,000 - 5,000

168

TWO PAIRS OF GEM-SET PENDANT EARRINGS

mounted in 18k gold; estimated total diamond weight: 1.20cts; lengths: 1 3/4in. and 1 7/8in.

\$3,000 - 5,000

169

A BLACK ONYX AND DIAMOND BRACELET

mounted in platinum and 18k gold; estimated total diamond weight: 1.80cts; gross weight approximately: 67 grams; length: 7in.; signed Bondanza, no. 165

\$2,000 - 3,000



169

168





170
A SAPPHIRE, RUBY AND DIAMOND CLIP, CIRCA 1945

mounted in 18k gold; dimensions: 3 x 1 3/5in.

\$2,500 - 3,500

171
A PAIR OF GOLD EAR CLIPS, BVLGARI

18k gold; diameter: 1/2in.; signed: Bvlgari

\$1,000 - 1,500

172
A DIAMOND AND EMERALD BIRD BROOCH, CARTIER

mounted in 18k gold and platinum; estimated total diamond weight: 2.50cts; dimensions: 1 3/4 x 1 1/4in.; signed Cartier

\$6,000 - 8,000

173
A BLOODSTONE AND GOLD BRACELET WRISTWATCH, VACHERON & CONSTANTIN, CIRCA 1960

mechanical movement; 18k gold; gross weight approximately: 74 grams; width: 20mm; length: 7in.; case, movement, and bracelet signed

\$6,000 - 8,000

174
A DIAMOND RING

mounted in 14k bi-color gold; estimated total diamond weight: 2.50cts; size: 5 1/4

\$2,200 - 3,200



175



176



177

175
A MACASSAR EBONY SUITE, FRENCH, CIRCA 1970

mounted in 18k gold; ear clip dimensions: 1 3/5 x 1 1/8in.; bracelet length: 6 1/2in.; ring size: 6 1/2; with French assay and maker's marks

\$3,500 - 4,500

176^Y
A CORAL AND BLACK ONYX RING
mounted in 18k gold; size: 6

\$2,500 - 3,500

177
A GOLD MEXICAN COIN AND GOLD LAPEL WATCH, PAUL FLATO

mechanical movement, skeletonized dial, 14k gold and metal; gross weight approximately: 39 grams; diameter: 37mm.; movement signed Alfex, brooch signed Paul Flato

\$3,000 - 5,000

Circa 1980



178

179

180

**PROPERTY FROM A LA JOLLA,
CALIFORNIA ESTATE, LOTS 178 AND 179**

**178
A PAIR OF DIAMOND EAR CLIPS,
TAMBETTI**

mounted in 18k gold; estimated total diamond weight: 5.20cts; gross weight approximately: 46 grams; dimensions: 1 1/8 x 1 in.; signed Tambetti

\$2,500 - 3,500

**179
A TIGERS-EYE, SMOKY QUARTZ AND
BLACK ONYX NECKLACE**

mounted in 14k gold and sterling silver; length: 16in.

\$3,000 - 5,000

**180
A PINK TOURMALINE AND DIAMOND
RING**

centering an oval carved pink tourmaline approximately: 16.70 x 12.99 x 5.43mm; mounted in 18k gold; total diamond weight: 1.14cts; size: 6 3/4

**\$1,500 - 2,000
To be sold without reserve**



181

182



183



184



185

181
A PERIDOT AND DIAMOND PENDANT
centering an oval brilliant-cut peridot
approximately: 11.07 x 9.13 x 5.46mm;
mounted in 14k gold; estimated total
diamond weight: 1.35cts; length: 18in

\$1,500 - 2,000

182
A DIAMOND BRACELET WRISTWATCH
back-wound mechanical movement;
mounted in 14k gold; gross weight
approximately: 33 grams; width: 9mm;
length: 6 1/2in.; dial signed Laykin et Cie

\$1,000 - 1,500

183
TWO GOLD BRACELETS
18k gold; weighing approximately: 97 grams;
lengths: 7 1/4in. and 7in.

\$1,800 - 2,200

184
A DIAMOND BROOCH
mounted in platinum and 18k gold; estimated
total diamond weight: 4.00cts; gross weight
approximately: 38 grams; dimensions: 2 1/2
x 2 1/4in.

\$3,000 - 5,000

185
**A DIAMOND AND ENAMEL TIGER
HINGED BANGLE**
mounted in 18k bi-color gold; gross weight
approximately: 86 grams; diameter: 2 1/4in.

\$4,000 - 6,000



186



187



187



186

TWO COLORED CULTURED PEARL AND DIAMOND PENDANTS

pearls approximately: 11.5 x 14.8mm; mounted in 18k white gold; estimated total diamond weight: 1.00ct; dimensions: 2 1/2 x 1 1/2in. and 1 1/4 x 1in.

\$1,000 - 1,500

187

A COLLECTION OF DIAMOND AND GEM-SET JEWELRY, DAVID YURMAN

mounted in silver, 14k gold and 18k gold; gross weight approximately: 112 grams; cuff diameters: 2 3/8in. and 2 1/2in.; ear clip dimensions: 1 1/8 x 1 1/8in.; ring sizes: 6 1/4 and 7 1/2; signed D.Y. and D. Yurman

\$1,000 - 1,500

To be sold without reserve



188



189



190



191



192

PROPERTY FROM A SOUTHERN CALIFORNIA ESTATE

188

A STAINLESS STEEL WRISTWATCH, HERMÈS

mechanical movement; width: 32mm; dial signed Hermès

\$800 - 1,000

189

A CAT'S-EYE CHRYSOBERYL AND DIAMOND RING

centering an oval double cabochon cat's-eye chrysoberyl approximately: 8.59 x 7.31 x 4.66mm; mounted in 14k white gold; size: 7 1/4

\$1,000 - 1,500

To be sold without reserve

190

A CULTURED PEARL AND DIAMOND BRACELET

pearls approximately: 5.7 to 5.9mm; mounted in 14k white gold; estimated total diamond weight: 3.00cts; length: 7 1/4in.

\$1,000 - 1,500

191

A PAIR OF DIAMOND EAR CLIPS

mounted in platinum and 18k white gold; estimated total diamond weight: 1.15cts; dimensions: 3/4 x 5/8in.

\$800 - 1,200

192

A DIAMOND BROOCH

mounted in platinum; estimated total diamond weight: 6.50cts; dimensions: 2 1/8 x 1 1/4in.

\$3,000 - 5,000



196

195



193

194

193
A WHITE GOLD 'PASHA' WRISTWATCH, CARTIER
automatic movement, diamond indexes, cabochon diamond-set crown; 14k white gold; gross weight approximately: 127 grams; case width: 34mm; length: 6in.; case, dial, and movement signed, numbered 369227MG 2528

\$6,000 - 8,000



194
A DIAMOND BRACELET
mounted in platinum; estimated total diamond weight: 9.25cts; length: 7in.

\$5,500 - 6,500

195
A COLORED CULTURED PEARL AND DIAMOND DOUBLE STRAND NECKLACE
pearls approximately: 12.1 to 16.3mm; mounted in 18k gold; length: 19in. (pearls untested for origin of color)

\$2,500 - 3,500

196
A PAIR OF COLORED DIAMOND AND DIAMOND EAR CLIPS
mounted in 18k white gold; estimated total diamond weight: 17.00cts; dimensions: 1 3/4 x 1 1/2in. (brown, yellow and green diamonds untested for origin of color)

\$4,000 - 6,000



197
A PAIR OF EMERALD STUD EARRINGS
mounted in 14k white gold; dimensions: 1/4 x 1/4in.

\$1,500 - 2,000

198
A DIAMOND NECKLACE, STEFAN HAFNER
mounted in 18k white gold; estimated total diamond weight: 3.25cts; length: 13 1/2in.; with makers mark

\$3,500 - 5,500



199
DIAMOND COLLAR NECKLACE
suspending seven briolette-cut diamonds weighing approximately: 4.05cts; mounted in 18k white gold; estimated total remaining diamond weight: 6.75cts; gross weight approximately: 44 grams; length: 14in.

\$3,500 - 5,500

200
AN EMERALD AND DIAMOND RING
centering an octagonal step-cut emerald weighing: 6.31cts; mounted in platinum and 18k gold; size: 6 1/2

\$7,500 - 9,500

Accompanied by GIA report #5201260416, dated May 7, 2019, stating the emerald as: natural, Colombian origin, evidence of clarity enhancement (F1).



203



205



204



202



201

**201
A DIAMOND BRACELET WITH A PAIR OF
DIAMOND EAR CLIPS**

bracelet mounted in 14k white gold, earrings mounted in platinum; estimated total diamond weight: 4.60cts; gross estimated weight: 32 grams; bracelet length: 6in. earring drop: 1 1/5in

\$1,500 - 2,500

**202
A DIAMOND, SYNTHETIC SAPPHIRE
BRACELET WRISTWATCH, GUBELIN**

mechanical movement; 14k white gold; estimated total diamond weight: 2.00cts; gross weight approximately: 20 grams; case width 15mm; length 6 1/4 in.; case, dial and movement signed, case numbered 201034

\$1,500 - 2,000





PROPERTY FROM A LA JOLLA, CALIFORNIA ESTATE

203
A MULTI-STRAND CULTURED PEARL AND DIAMOND NECKLACE, TAMBETTI
 pearls approximately: 6.5 to 6.8mm; mounted in platinum; estimated total diamond weight: 2.65cts; lengths: 14in. to 18in.; signed Tambetti

\$4,000 - 6,000

204
A DIAMOND AND SAPPHIRE BAND TOGETHER WITH A SAPPHIRE BAND
 mounted in 18k white gold; sizes: 6 and 6 3/4

\$1,800 - 2,500

205
A PAIR OF SAPPHIRE AND DIAMOND STUD EARRINGS
 mounted in 18k white gold; estimated total diamond weight: 2.00cts; dimensions: 3/4 x 5/8in.

\$3,500 - 4,500

206
A PAIR OF SAPPHIRE AND DIAMOND PENDANT EARRINGS
 mounted in 18k white gold; length: 1 5/8in.

\$1,500 - 2,500

207
A PAIR OF SAPPHIRE HOOP EARRINGS
 mounted in 18k gold; diameter: 1 1/4in.

\$2,000 - 3,000

208
A DIAMOND NECKLACE
 mounted in 18k white gold; estimated total diamond weight: 4.05cts; length: 16 1/2in.

\$2,000 - 3,000

PROPERTY OF A HOLLYWOOD HILLS COLLECTOR

209
A SAPPHIRE BAND
 mounted in 14k white gold; size: 5 1/2

\$1,200 - 1,500

210
A SAPPHIRE AND DIAMOND RING
 centering a cushion brilliant step-cut sapphire weighing: 3.20cts; mounted in platinum; size: 7

\$2,000 - 3,000

Accompanied by GIA report #2195600285, dated August 22, 2018, stating the Sapphire as: natural corundum, no indications of heating.

211
A SAPPHIRE AND DIAMOND RING
 centering an oval brilliant-cut sapphire weighing: 3.02cts; mounted in platinum; size: 7

\$1,500 - 2,000

Accompanied by GIA report #5191149890, dated March 14, 2018, stating the Sapphire as: natural corundum, no evidence of heat enhancement.



212

**212
A PAIR OF EMERALD AND DIAMOND
EAR CLIPS**

*mounted in 14k white gold; estimated total
diamond weight: 3.75cts; length: 1 1/8in.*

\$5,000 - 7,000

**213
A DIAMOND RING**

*mounted in platinum; estimated total
diamond weight: 3.30cts; size: 7 1/4*

\$2,500 - 3,500

213

**PROPERTY FROM A SAN DIEGO,
CALIFORNIA ESTATE**

**214
A DIAMOND NECKLACE**

*mounted in platinum; estimated total
diamond weight: 11.60cts; gross weight
approximately: 47 grams; length: 17in.*

\$6,000 - 8,000

215

**215
A PAIR OF DIAMOND EAR CLIPS**

*mounted in 18k white gold; estimated total
diamond weight: 1.55cts; length: 1 1/4in.*

\$800 - 1,000

214



216

216
**A PAIR OF CULTURED PEARL AND
 DIAMOND EAR CLIPS**
 pearls approximately: 12.0mm; mounted
 in 14k white gold; estimated total diamond
 weight: 1.35cts; length: 1 1/4in.

\$1,000 - 1,500

217

217
**A COLLECTION OF FOUR DIAMOND
 BANGLES**
 mounted in 18k white gold; estimated total
 diamond weight: 5.00cts; gross weight
 approximately: 39 grams; diameters: 2 5/8
 and 2 1/2in.

\$3,000 - 5,000

218

218
A DIAMOND RING
 centering an old European-cut diamond
 approximately: 1.30cts; mounted in platinum;
 size: 6

\$5,000 - 8,000

219

219
**A PAIR OF EMERALD AND DIAMOND
 PENDANT EARRINGS**
 mounted in 18k white gold; estimated total
 diamond weight: 12.30cts; length: 2 1/2in.

\$1,500 - 3,000

Session Two

Lots 220-475







220

221

222

223

220

A JADEITE AND DIAMOND RING

centering an oval double cabochon jadeite weighs: 4.70cts; mounted in platinum; total diamond weight: 1.36cts; size: 8 3/4

\$1,200 - 1,500

Accompanied by GIA report #2193949203, dated January 7, 2019 stating the jadeite as: natural, no indications of impregnation.

221

A PAIR OF NATURAL PEARL AND DIAMOND PENDANT EARRINGS

mounted in 14k white gold; length: 2 1/8in.

\$1,500 - 2,000

Accompanied by GIA report #5201382580, dated July, 9, 2019, stating the pearls as: Natural, Pinctada species, saltwater.

222

AN EMERALD AND DIAMOND NECKLACE

mounted in 18k white gold; estimated total diamond weight: 14.15cts; gross weight approximately: 50 grams; length: 17 1/2in.

\$9,000 - 12,000

223

A DIAMOND, RUBY AND EMERALD RING

centering a round brilliant-cut diamond weighing: 1.30cts; mounted in platinum; total remaining diamond weight: 1.05cts; size: 7

\$2,000 - 3,000



224

224
A PAIR OF COLORED DIAMOND PENDANT EARRINGS
 mounted in 18k white gold; total diamond weight: 3.08cts; length: 1in. (yellow diamonds untested for origin of color)

\$2,000 - 3,000

225
A GARNET, DIAMOND AND COLORED DIAMOND RING, MARK SCHNIDER
 mounted in platinum; gross weight approximately: 27 grams; size: 8 1/2; signed: MS

\$1,800 - 2,500
 To be sold without reserve

227

225

226

228

226
A RUBY AND DIAMOND BRACELET
 mounted in 18k white gold; total diamond weight: 5.40cts; length: 7 1/2in.

\$3,000 - 5,000

227
A FANCY VIVID YELLOW DIAMOND, COLORED DIAMOND AND DIAMOND RING
 centering an oval modified brilliant-cut Fancy Vivid Yellow diamond weighing: 0.65ct; mounted in 18k bi-color gold; estimated total remaining diamond weight: 1.75cts; size: 6 (accent yellow diamonds untested for origin of color)

\$5,000 - 7,000

Accompanied by GIA report #17223124, dated May 28, 2008, stating the diamond as: natural Fancy Vivid Yellow color, VS1 clarity.

228
A RUBY AND DIAMOND PENDANT ON CHAIN
 mounted in 18k white gold; pendant dimensions: 1 1/2 x 1in.; chain length: 16in.

\$800 - 1,200



229

229
A PAIR OF RUBY AND DIAMOND EAR CLIPS
mounted in 18k white gold; dimensions: 1 x 7/8in.

\$1,500 - 2,000

230

230
A DEMANTOID GARNET AND DIAMOND RING
centering a round brilliant-cut demantoid garnet weighing: 3.25cts; mounted in 14k white gold; estimated total diamond weight: 1.00ct; size: 5 1/2

\$4,000 - 6,000

Accompanied by AGL report #1088621, dated December 1, 2017, stating the Demantoid as: natural andradite garnet, Russian origin, no evidence of heat enhancement.

233



231

231
A GOLD AND GARNET BEAD TORSADE
beads approximately: 5.2mm; 14k gold clasp; length: 18in.

\$1,500 - 2,000

PROPERTY OF A LADY

232

232
A RUBY AND DIAMOND BRACELET
mounted in 18k bi-color gold; total diamond weight: 2.02cts; length: 7in.; with maker's mark

\$4,000 - 6,000

234



232



235



236



237

238

239

233

A RED SPINEL AND DIAMOND RING

centering a cushion brilliant-cut spinel weighing: 2.36cts; mounted in 14k white gold; estimated total diamond weight: 1.00ct; size: 6

\$2,500 - 3,500

Accompanied by GIA report #2193942565, dated January 3, 2019, stating the Spinel as: natural Spinel, Burmese Origin, no indications of heating.

234

A DIAMOND AND EMERALD PENDANT

centering a pear brilliant-cut diamond weighing approximately: 2.35cts; mounted in platinum; 14k white gold chain; estimated total diamond weight: 2.65cts; length: 15 1/4in; signed: Sophia D.

\$4,000 - 7,000

235

AN EMERALD AND DIAMOND RING

mounted in platinum and 18k gold; estimated total diamond weight: 2.40cts; size: 6

\$1,500 - 2,500

236

A DIAMOND AND RUBY RING

centering an old European-cut diamond approximately: 2.10cts; mounted in platinum; estimated total remaining diamond weight: 1.10cts; size: 6 1/4

\$3,500 - 4,500

237

A DIAMOND TEDDY BEAR BRACELET

mounted in 18k white gold; estimated total diamond weight: 1.95cts; length: 7in

\$2,000 - 3,000

238

A PAIR OF RUBY, EMERALD AND DIAMOND BRACELETS

mounted in 14k white gold; lengths: 7in.

\$3,500 - 5,500

239

A PAIR OF RUBY AND DIAMOND PENDANT EARRINGS AND RING SET, RUDLE

mounted in silver-topped gold; estimated total diamond weight: 3.20cts; earring length: 1 7/8in.; ring: 7 1/2; signed S.V. Rudle with Russian assay marks

\$2,000 - 4,000



240



241



242



243

241
**TWO DIAMOND AND GEM-SET
BROOCHES**

*mounted in 18k gold and silver-topped gold;
estimated total diamond weight: 2.90cts;
gross weight approximately: 43 grams;
dimensions: 1 1/2 x 2in. and 4 5/8 x 1 1/4in.*

\$1,800 - 2,500

240
**A DIAMOND AND RUBY BRACELET
WRISTWATCH, PATEK PHILIPPE**

*quartz movement; mounted in 18k gold;
gross weight approximately: 56 grams;
width: 18mm; length: 7in.; case, dial, and
movement signed and numbered 1605200;
Ref. 4752/021; with Certificate of Origin and
box*

\$3,000 - 5,000

PROPERTY OF A LADY

242
A RUBY AND DIAMOND RING

*centering a marquis mixed-cut ruby
measuring: 12.24 x 6.31 x 4.65mm; mounted
in 18k gold; estimated total diamond weight:
1.75cts; size: 5 1/4*

\$2,000 - 3,000
To be sold without reserve

243
**A DIAMOND HINGED BANGLE
TOGETHER WITH A RUBY HINGED
BANGLE**

*mounted in 18k gold; estimated total
diamond weight: 1.00ct; gross weight
approximately: 40 grams; diameters: 2 1/8
and 2 1/4in.; ruby bangle with maker's mark
no. 802307 305*

\$2,000 - 3,000



245

244

247

246

244

A DIAMOND RING WITH A GARNET RING, CHANEL AND POMELLATO
mounted in 18k gold; sizes: 5 and 6 1/2; signed Chanel, no. 112598; with French assay marks; signed Pomellato; with French assay and maker's marks

\$1,200 - 1,800
To be sold without reserve

245
A DIAMOND NECKLACE
mounted in 18k gold; total diamond weight: 12.72cts; length: 17in.

\$3,000 - 5,000

246
A PAIR OF SAPPHIRE, RUBY AND DIAMOND PENDANT EARRINGS
mounted in 18k gold; total diamond weight: 2.60cts; length: 3in.

\$4,000 - 6,000

247
A RUBY AND DIAMOND RING, OSCAR HEYMAN & BROTHERS
mounted in 18k gold; size: 4 1/2; with maker's mark, no. 24287

\$2,000 - 3,000



248

248
**A PAIR OF SAPPHIRE AND DIAMOND
EAR CLIPS**

mounted in 18k gold; dimensions: 7/8 x 3/4in.

\$2,500 - 3,500



249

**PROPERTY OF A THOUSAND OAKS,
CALIFORNIA COLLECTOR**

249

**A DIAMOND AND GEM-SET PENDANT/
BROOCH**

mounted in 18k gold; estimated total diamond weight: 1.10cts; gross weight approximately: 31 grams; dimensions: 2 1/4 x 2in.

\$1,500 - 2,000
To be sold without reserve



251



250

250
A GOLD BRACELET

18k gold; weighing approximately: 50 grams; length: 6 5/8in.; width: 1 3/5in.

\$1,000 - 1,500
To be sold without reserve

251

**TWO DIAMOND AND GEM-SET ANIMAL
BROOCHES**

mounted in 18k bi-color gold; dimensions: 1 1/2 x 1 3/4in. and 1 1/4 x 1in.

\$1,200 - 1,500



252

252

A SAPPHIRE AND DIAMOND PENDANT

centering an oval brilliant-cut sapphire measuring: 7.08 x 5.33mm; mounted in 18k gold and platinum; estimated total diamond weight: 0.35ct

\$1,200 - 1,500

To be sold without reserve



253

PROPERTY OF A LOS ANGELES COLLECTOR

253

A SAPPHIRE, RUBY AND DIAMOND NECKLACE AND EAR CLIP SET

mounted in 18k gold; estimated total diamond weight: 12.75cts; gross weight approximately: 129 grams; necklace length: 17in.; earring length: 1 5/8in.

\$12,000 - 15,000



254

254

A SAPPHIRE AND DIAMOND FLOWER BROOCH, TIFFANY & CO. CIRCA 1950

mounted in 18k gold; length: 2in.; signed: Tiffany & Co., Italy

\$1,000 - 1,500

255

SAPPHIRE AND DIAMOND RING

centering an oval brilliant-cut sapphire measuring: 11.69 x 7.93 x 5.37mm; mounted in 18k gold; size: 6.5

\$3,000 - 5,000



255



256



257



258



259

256

**AN AQUAMARINE AND DIAMOND RING,
DENISE ROBERGE**

centering a rectangular mixed-cut aquamarine approximately: 17.17 x 12.49 x 8.71mm; mounted in 14k gold; size: 5 1/4; with maker's marks

\$1,500 - 2,000

257

A CITRINE AND AMETHYST RING SET

mounted in 18k gold; size: 6 1/4

\$1,500 - 2,000

PROPERTY OF A LADY

258

A GOLD BRACELET

14k gold; weighing approximately: 78 grams; length: 7 1/2in.; width: 1 1/8in.

\$1,600 - 1,800

259

A PERidot AND DIAMOND 'TUBOGAS' RING, BVLGARI

mounted in 18k gold; size: 5 1/2; signed Bvlgari; with maker's mark

\$3,000 - 4,000

260

A RUBY, EMERALD, AND DIAMOND QUATREFOIL BROOCH

mounted in platinum and 18k gold; estimated total diamond weight: 1.70cts; brooch length: 2 1/2in.

\$5,000 - 7,000

PROPERTY OF A THOUSAND OAKS, CALIFORNIA COLLECTOR

261

A DIAMOND AND GEMSTONE BEADED SUITE

mounted in 14k gold; necklace lengths: 20 to 23in.; bracelet length: 7in.; earring length: 1 3/4in.

\$1,000 - 1,500

To be sold without reserve



261

260



265



262



266



263



267



264



268

262

A PAIR OF AMETHYST, COLORED DIAMOND AND TOURMALINE EAR CLIPS

mounted in 18k gold; dimensions: 3/4 x 3/4in. (yellow diamonds untested for origin of color)

\$1,000 - 1,500

263

A COLORED DIAMOND, DIAMOND AND GEM-SET BIRD BROOCH

mounted in 18k bi-color gold; dimensions: 1 1/4 x 1in.

\$1,500 - 2,500

264

AN AMETHYST RING, MIMI MILANO

centering a cushion brilliant-cut amethyst approximately: 15.33 x 15.25mm; mounted in 18k bi-color gold; gross weight approximately: 45 grams; size: 7 1/4; with maker's mark and signed box

\$1,800 - 2,500

265

A MULTI-COLOR SAPPHIRE NECKLACE

mounted in 18k gold; length: 76in.

\$3,500 - 4,500

266

A PAIR OF AMETHYST, AQUAMARINE AND DIAMOND PENDANT EARRINGS

mounted in 18k gold; length: 1 3/4in.

\$1,200 - 1,500

267

A BLUE TOPAZ AND AMETHYST RING, BVLGARI

mounted in 18k gold; size: 4 3/4; signed Bvlgari, no. 14032

\$2,500 - 3,500

268

A GEM-SET NECKLACE WITH AN AMETHYST RING

necklace mounted in 18k gold; ring mounted in 18k gold and plastic; necklace length: 18in.; ring size: 8

\$1,800 - 2,500



269



270



272



271

269
A CULTURED PEARL, RUBY AND DIAMOND PIRATE CLIP, FRENCH, CIRCA 1945
mounted in 18k gold; dimensions: 1 3/4 x 1 1/4in.; stamped Paris, with workshop marks
\$2,000 - 3,000

270
A GOLD BRACELET, TIFFANY & CO.
18k gold; weighing approximately: 116 grams; length: 7in.; width: 1 1/4in.; signed Tiffany & Co.
\$4,000 - 6,000

271
A CULTURED PEARL, DIAMOND AND TURQUOISE SNAKE CHARMER CLIP, FRENCH, CIRCA 1945
mounted in 18k gold; dimensions: 2 1/4 x 1 1/2in.; stamped Paris, with workshop marks
\$2,000 - 3,000

272
A PAIR OF RUBY AND DIAMOND EAR CLIPS, OSCAR HEYMAN BROTHERS
mounted in 18k gold; estimated total diamond weight: 2.20cts; length: 1 1/8in.; with maker's marks, no. 702935
\$2,000 - 3,000

273
A PEARL, RUBY AND DIAMOND NECKLACE
mounted in 18k gold; length: 50in.
\$8,000 - 10,000

274
A PAIR OF DIAMOND HOOP EAR CLIPS, VAN CLEEF & ARPELS
mounted in 18k gold; length: 1 1/4in.; signed VCA, no. B3282A18
\$3,000 - 5,000

275
A PAIR OF DIAMOND EAR CLIPS, CARTIER
mounted in 18k gold; estimated total diamond weight: 1.30cts; signed Cartier, no. 923549; with signed box
\$3,000 - 5,000

276
A TURQUOISE AND DIAMOND TURTLE PENDANT/BROOCH, HAMMERMAN BROTHERS
mounted in 18k gold and platinum; dimensions: 1 3/5 x 1in.; signed HB
\$1,800 - 2,200



273



276



275



274



277



278



280



279

**PROPERTY FROM A LA JOLLA,
CALIFORNIA ESTATE**

277

**A PAIR OF MABÉ PEARL AND DIAMOND
EAR CLIPS, VAN CLEEF & ARPELS,
CIRCA 1970**

mabé pearls approximately: 18.6mm;
mounted in 18k gold; estimated total
diamond weight: 3.45cts; dimensions: 1 1/4
x 1 3/5in.; signed Van Cleef and Arpels, NY,
no. 731 so

\$5,000 - 7,000

278

**A DIAMOND BRACELET WRISTWATCH,
ROLEX, CIRCA 1950**

mechanical movement; mounted in 18k gold;
estimated total diamond weight: 1.25cts;
gross weight approximately: 45 grams;
width: 15mm; length: 7in.; case, dial, and
movement signed

\$2,000 - 3,000

279

**A SAPPHIRE AND DIAMOND CLIP,
E. PEARL**

mounted in 18k bi-color gold; estimated total
diamond weight: 1.05cts; dimensions: 2 3/4
x 1 1/2in.; signed E. Pearl

\$800 - 1,200

280

**A DIAMOND FLOWER BROOCH, VAN
CLEEF & ARPELS**

mounted in 18k gold; estimated total
diamond weight: 1.50cts; gross weight
approximately: 30 grams; dimensions: 2 x 1
3/4in.; signed VCA, no. 1V617.8

\$4,000 - 6,000





281



282

281^Y

A COLLECTION OF CORAL AND DIAMOND JEWELRY

mounted in 14k bi-color gold and 18k gold; estimated total diamond weight: 1.30cts; gross weight approximately: 42 grams; earring length: 1 1/4in.; brooch dimensions: 1 1/2 x 3/4in.; ring size: 8 1/2 (with ring sizer)

\$1,200 - 1,500

To be sold without reserve

282

A DIAMOND BRACELET

mounted in 18k gold; estimated total diamond weight: 2.50cts; gross weight approximately: 56 grams; length: 6 1/2in.

\$2,500 - 3,500

PROPERTY FROM A LA JOLLA, CALIFORNIA COLLECTOR

283

AN AMETHYST AND DIAMOND RING

centering an oval cabochon amethyst approximately: 26.9 x 21.9 x 15.2mm; mounted in 18k gold; estimated total diamond weight: 1.10cts.; gross weight approximately: 31 grams; size: 6 1/2

\$4,000 - 6,000

284

A PAIR OF DIAMOND 'X' EAR CLIPS, PALOMA PICASSO FOR TIFFANY & CO.

mounted in 18k gold and platinum; dimensions: 1 1/4 x 3/4in.; signed Paloma Picasso and Tiffany & Co.

\$2,000 - 3,000

285^Y

TWO CORAL AND CULTURED PEARL NECKLACES

pearls approximately: 4.2 to 4.5mm; coral beads approximately: 5.2 to 13.8mm; mounted in 18k gold; lengths: 22in. and 24in.

\$1,500 - 2,000

To be sold without reserve

286

A DIAMOND CUFF, ANGELA CUMMINGS FOR TIFFANY & CO., 1980

mounted in 18k gold; estimated total diamond weight: 1.80cts; gross weight approximately: 39 grams; diameter: 2 1/4in.; signed Tiffany & Co.

\$2,500 - 3,500



284



283



285



286



287

289

288

**PROPERTY FROM A LA JOLLA,
CALIFORNIA ESTATE**

287

A DIAMOND BROOCH

centering an old european-cut diamond approximately: 1.20cts; mounted in platinum topped gold; estimated total remaining diamond weight: 6.90cts; gross weight approximately: 36 grams; dimensions: 2 1/4 x 1 3/4in.

\$3,000 - 5,000

PROPERTY FROM TOTAL COURAGE INC

288

**A CULTURED PEARL AND DIAMOND
COLLAR NECKLACE**

pearls approximately: 6.9 to 7.7mm; mounted in 18k gold; estimated total diamond weight: 3.60cts; length: 15 1/2in.

\$3,000 - 5,000

Total Courage, founded by Colonel Darryl W. Daugherty, Jr., is a public charity that provides character coaching to high school and college athletes across the country.

289

A PAIR GEM-SET EAR CLIPS

mounted in 18k gold; dimensions: 3/4 x 3/4in.

\$1,000 - 1,500



290



291



292

290

A PAIR OF DIAMOND STARFISH EAR CLIPS

mounted in 18k gold; gross weight approximately: 40 grams; dimensions: 1 3/4 x 1 3/4in.

\$2,000 - 3,000

291

A DIAMOND BEAD NECKLACE TOGETHER WITH AN EMERALD BEAD NECKLACE

mounted in 18k gold and 18k white gold; lengths: 18in. and 21in.

\$2,000 - 3,000

292

A GEM-SET CHARM BRACELET

mounted in 18k gold; length: 7in.

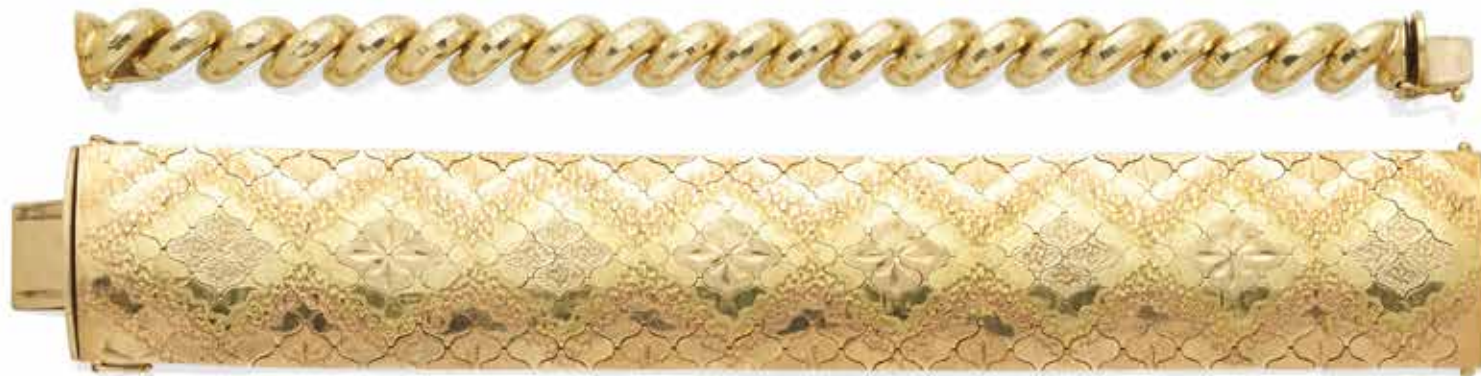
\$1,500 - 2,000



293



294



295

293

A SET OF THREE EMERALD, RUBY AND DIAMOND HINGED BANGLES

mounted in 14k gold; gross weight approximately: 45 grams; diameter: 2 1/4in.

\$1,500 - 2,000

To be sold without reserve

294

A PAIR OF MALACHITE AND DIAMOND EARRINGS, RING AND PENDANT SUITE

mounted in 18k gold; gross weight approximately: 84 grams; ring size: 7; earring length: 1 1/4in. and pendant length: 3in.

\$3,000 - 5,000

295

TWO GOLD BRACELETS

18k bi-color gold and 14k gold; weighing approximately: 114 grams; lengths: 7 3/4in. and 7 1/2in.

\$1,800 - 2,200

296

A PAIR OF SHELL AND EMERALD EAR CLIPS, MAZ

mounted in 14k gold; dimensions: 1 1/8 x 1in.; signed Maz

\$1,200 - 1,500

297

A JADEITE AND DIAMOND BRACELET

mounted in 14k gold; gross weight approximately: 59 grams; length: 7 1/8in.

\$2,000 - 3,000

To be sold without reserve

Accompanied by Mason Kay report no. 190131-5957, dated January 31, 2019, stating: Natural Jadeite Jade - No Dye or Impregnation Detected - 'A' Jade.

298

A GROUP OF THREE GEM-SET RINGS

mounted in 18k gold; sizes: 6 3/4 and 7

\$2,200 - 3,200

299

A DIAMOND NECKLACE

mounted in 18k gold; gross weight approximately: 64 grams; length: 16in.

\$1,500 - 2,000



296

297



298

299





300

300
A PERIDOT AND DIAMOND NECKLACE
mounted in 14k white gold; estimated total diamond weight: 1.25cts; length: 15 1/2in.

\$2,500 - 5,000



301

301
A JADEITE AND DIAMOND RING
centering an oval cabochon jade; mounted in platinum; size: 5

\$18,000 - 22,000

Accompanied by Mason Kay report #190725-1164, dated July 25, 2019, stating: Natural Jadeite Jade-No Dye or Impregnation detected-'A' Jade.



302

302
A PAIR OF 18K WHITE GOLD DIAMOND PENDANT EARRINGS

mounted in 18k white gold; estimated total diamond weight: 10.60cts; length: 2 1/4in.

\$9,000 - 12,000



303

303
**A PAIR OF GREEN TURQUOISE AND
DIAMOND PENDANT EARRINGS**
*mounted 18k white gold; estimated total
diamond weight: 1.70cts; length: 3in.*
\$2,000 - 3,000



304

304
A DIAMOND NECKLACE
*mounted in 18k gold; estimated total
diamond weight: 23.00cts, length: 17in*
\$7,000 - 9,000



305

305
A DIAMOND BAND
*mounted in platinum; estimated total
diamond weight: 4.00cts; size: 7*
\$2,200 - 2,800



306

306
**A PAIR OF TSAVORITE GARNET AND
DIAMOND HOOP EARRINGS**
*mounted in 18k white gold; estimated total
diamond weight: 2.10cts; diameter: 1 3/4in.*
\$2,500 - 3,500



307

307

A BLACK ONYX, ENAMEL, COLORED DIAMOND AND DIAMOND 'GIARDINI DI BOBOLI' NECKLACE AND EAR CLIP SET, ATTRIBUTED TO NOUVELLE BAGUE

mounted in 18k white gold; chain length 16in.; pendant length; 1in.; ear clip length: 1in.; unsigned with Italian marks

\$2,500 - 3,500

308

A PAIR OF CULTURED PEARL AND DIAMOND PENDANT EARRINGS

pearls approximately: 16.4mm; mounted in 18k white gold; estimated total diamond weight: 1.90cts; length: 1 3/4in.

\$1,500 - 2,000

309

A CULTURED PEARL, COLORED DIAMOND AND DIAMOND NECKLACE

pearls approximately: 11.0 to 13.0mm; 18k white gold; length: 39in. (black diamonds untested for origin of color)

\$6,000 - 10,000



308

310

A PEARL AND DIAMOND RING

mounted in 18k white gold; size: 7

\$1,000 - 1,500

To be sold without reserve

311

A PAIR OF COLORED CULTURED PEARL, CULTURED PEARL AND DIAMOND EAR CLIPS

mounted in 18k white gold; estimated total diamond weight: 3.10cts; length: 1in. (pearls untested for origin of color)

\$2,000 - 3,000

312

A PAIR OF KYANITE AND DIAMOND PENDANT EARRINGS

mounted in silver and 18k gold; total diamond weight: 4.99cts; length: 2 5/8in.

\$1,500 - 2,000

To be sold without reserve

313

A SAPPHIRE AND DIAMOND LOVE RING, CHOPARD

centering a heart brilliant-cut sapphire measuring: 4.8 x 5.81 x 3.06mm; mounted in 18k white gold; size: 5 3/4; signed Chopard no. 9863349

\$1,000 - 1,500

314

A PAIR OF COLORED DIAMOND AND DIAMOND STUDS

centering two brilliant-cut diamonds weighing: 2.16cts and 2.12cts; mounted in blackened 18k gold; estimated total remaining diamond weight: 1.45cts; diameter: 1/2in. (brown diamonds untested for origin of color)

\$12,000 - 14,000



309

310

311

314

313

312



315

315
A JADEITE AND DIAMOND RING
centering a marquise cabochon jade;
mounted in platinum; size: 7

\$1,500 - 2,000

Accompanied by Mason Kay report #190429-854, dated April 29, 2019, stating: Natural Jadeite Jade-No Dye or Impregnation detected-'A' Jade.

316
A PAIR OF DIAMOND PENDANT EARRINGS

mounted in 18k white gold; estimated total diamond weight: 4.80cts; length: 2in.

\$1,800 - 2,200



316



317
A DIAMOND BRACELET
mounted in 18k white gold; estimated diamond weight: 5.60cts; length: 7in.

\$2,200 - 2,800

318
A DIAMOND BRACELET
mounted in 18k white gold; estimated total diamond weight: 16.85cts; length: 7in.

\$6,500 - 7,500

319
A PAIR OF JADEITE AND DIAMOND EAR CLIPS

centering a pear cabochon jade; mounted in 14k white gold; estimated total diamond weight: 4.50cts; dimensions: 1 1/4 x 1 1/8in.

\$3,000 - 5,000



320



319



318

Accompanied by Mason Kay report #190729-1333, dated July 29, 2019, stating: Natural Jadeite Jade-No Dye or Impregnation detected-'A' Jade.

320
A DIAMOND RING
centering a round brilliant-cut diamond weighing: 1.46cts; mounted in platinum; size: 7 1/4

\$4,000 - 6,000

Accompanied by GIA report #1206459666, dated July 22, 2019, stating the diamond as F color and SI clarity.



321

321
A JADEITE AND DIAMOND RING
centering a pear cabochon jade; mounted in 18k white gold; size: 6 1/2
\$5,000 - 7,000

Accompanied by Mason Kay report #190725-661, dated July 25, 2019, stating: Natural Jadeite Jade-No Dye or Impregnation detected-'A' Jade.



322

322
A PAIR OF DIAMOND PENDANT EARRINGS
mounted in 18k white gold; estimated total diamond weight: 5.40cts; length: 2 1/8in.
\$3,000 - 5,000

323
A DIAMOND BOW BROOCH, TIFFANY & CO. CIRCA 1925
mounted in platinum; estimated total diamond weight: 4.10cts; length: 4in.; signed Tiffany & Co.
\$2,500 - 3,500

324
A DIAMOND BRACELET
mounted in silver; estimated total diamond weight: 6.00cts; gross weight approximately: 39 grams; length: 7 1/2in.
\$3,000 - 5,000



325

325
A CARVED JADEITE AND DIAMOND RING
centering a carved jadeite cabochon approximately: 15.95 x 10.41 x 15.44mm; mounted in 18k white gold; size: 7 1/4
\$1,800 - 2,200

Accompanied by Mason Kay report #190725-1108, dated July 25, 2019, stating: Natural Jadeite Jade-No Dye or Impregnation detected-'A' Jade.

326
A PAIR JADEITE AND DIAMOND PENDANT EARRINGS
mounted in 14k white gold; length: 1 1/2in.
\$1,500 - 2,000

Accompanied by Mason Kay report #190725-360, dated February 21, 2019, stating: Natural Jadeite Jade-No Dye or Impregnation detected-'A' Jade.



326



323

324



327

327

A DIAMOND BROOCH, CIRCA 1920

mounted in platinum; estimated total diamond weight: 4.00cts; dimensions: 2 1/2 x 1in.

\$1,500 - 2,500



329

329

A DIAMOND NAVETTE RING

mounted in 14k white gold; estimated total diamond weight: 1.75cts; size: 4

\$1,000 - 1,500



330

330

A DIAMOND PENDANT NECKLACE, CIRCA 1920

mounted in platinum; 14k white gold chain; estimated total diamond weight: 1.85cts; pendant dimensions: 2 1/4 x 1 1/8in.

\$1,000 - 1,500



328

328

A DIAMOND AND EMERALD BRACELET, CIRCA 1925

mounted in platinum; estimated total diamond weight: 5.00cts; length: 6 3/4in.

\$2,500 - 3,500



331



333



332



334



335

331
AN EMERALD AND DIAMOND PENDANT NECKLACE

mounted in platinum; platinum chain; estimated total diamond weight: 1.20cts; dimensions: 1 7/8 x 5/8in.; chain length: 16in.

\$1,000 - 1,500

332
A DIAMOND RING, CIRCA 1930

mounted in platinum; estimated total diamond weight: 2.00cts; size: 4 3/4

\$2,500 - 3,500

333
AN EMERALD BANGLE
mounted in platinum; diameter: 2 3/4in.

\$5,000 - 7,000

334
A DIAMOND BANGLE WRISTWATCH, TIFFANY & CO.

mechanical movement; mounted in 14k gold and platinum; gross weight approximately: 45 grams; diameter: 25mm; length: 6in.; dial signed Tiffany & Co., movement signed C.H.Meylan

\$800 - 1,200

335
A DIAMOND BRACELET WRISTWATCH, HAMILTON
mechanical movement; mounted in platinum; estimated total diamond weight: 3.40cts.; width: 13mm; length 5 1/4in.; dial and movement signed

\$1,000 - 1,500



336



337



338



339

336

A COLORED DIAMOND AND DIAMOND RING

mounted in platinum topped 18k gold; estimated total diamond weight: 1.20cts; size: 7 1/2

\$1,500 - 2,000

PROPERTY FROM A NEW YORK ESTATE

338

A DIAMOND AND ENAMEL BRACELET WRISTWATCH, LACLOCHE FRÈRES, FRENCH; CIRCA 1910

mechanical movement; mounted in 18k gold; gross weight approximately: 44 grams; width 25mm; length: 6 5/8in.; dial signed, case numbered 10458; with french assay marks

\$2,000 - 3,000

339

A DIAMOND BROOCH, CIRCA 1915

centering an old European-cut diamond approximately: 2.80cts; mounted in platinum; estimated remaining diamond weight: 1.20cts; length: 2 9/16in.

\$10,000 - 15,000

337

A PEARL AND DIAMOND PIN, CIRCA 1900

pearls approximately: 3.8 to 6.5mm; mounted in platinum and silver; estimated total diamond weight: 1.70cts; dimensions: 1 3/4 x 1 1/4in.

\$3,000 - 5,000



340



341



343



342

340

A DIAMOND RING

centering an old mine-cut diamond approximately: 1.50cts; mounted in 18k gold and platinum; size: 7 1/2

\$4,000 - 6,000

341

A DIAMOND PENDANT/BROOCH, CIRCA 1890

mounted in platinum topped gold; dimensions: 2 x 1 1/4in.

\$1,200 - 1,500

342

A PEARL AND DIAMOND COLLAR

pearls approximately: 3.0 to 3.5mm; mounted in silver-topped gold; length: 12 1/4in.

\$2,000 - 3,000

To be sold without reserve

343

A DIAMOND RING, FRENCH

mounted in 18k gold and platinum; estimated total diamond weight: 1.60cts; size: 5 1/2; with French assay marks

\$2,500 - 3,500



344



347



348



345



346

344

A DIAMOND RING

centering an old European-cut diamond approximately: 1.70cts; mounted in platinum; size: 6 1/4

\$3,000 - 5,000

345

A DIAMOND PENDANT/BROOCH, CIRCA 1925

mounted in platinum; estimated total diamond weight: 5.45cts; length: 1 3/4in.

\$2,500 - 3,500

PROPERTY FROM A NEW YORK ESTATE

346

A DIAMOND WRISTWATCH, CIRCA 1920

mechanical movement; dial signed Ullmann, Geneve; estimated total diamond weight: 1.40cts; width: 10mm; length: 6 1/8in.

\$1,500 - 2,000

To be sold without reserve

347

A DIAMOND AND SAPPHIRE RING, CIRCA 1925

mounted in platinum; estimated total diamond weight: 1.15cts; size: 6 1/2

\$1,000 - 1,500

348

A DIAMOND BOW PENDANT/BROOCH, J.E. CALDWELL & CO. CIRCA 1910

mounted in platinum; estimated total diamond weight: 1.85cts; dimensions: 2 x 1 1/4in.; with partial signature and signed box

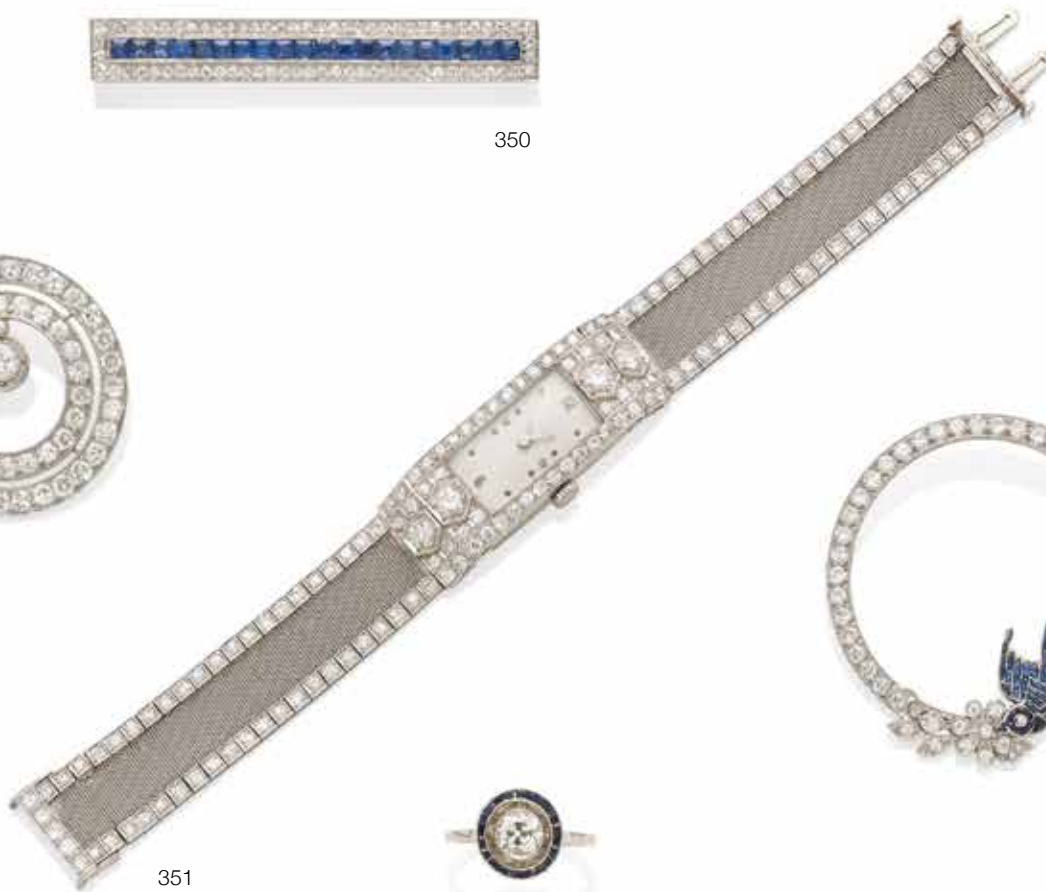
\$1,000 - 1,500



350



349



351



352



353

349

A DIAMOND CIRCLE BROOCH, CIRCA 1915

mounted in platinum and 18k gold; estimated total diamond weight: 4.10cts; diameter: 1 3/8in.

\$2,000 - 3,000

350

A SAPPHIRE AND DIAMOND BAR BROOCH

mounted in platinum; estimated total diamond weight: 1.50cts; length: 2 3/5in.

\$2,000 - 3,000

351

A DIAMOND BRACELET WRISTWATCH

mechanical movement; mounted in platinum; estimated total diamond weight: 4.00cts; width: 14mm; length: 6 1/4in.; movement signed Zador Watch Co.

\$1,200 - 1,800

352

A SAPPHIRE AND DIAMOND RING

mounted in platinum; size: 7 1/4

\$1,500 - 2,000

353

A DIAMOND AND SAPPHIRE BROOCH, CIRCA 1925

mounted in platinum; estimated total diamond weight: 1.50cts; diameter: 1 3/4in.

\$2,000 - 3,000



354

PROPERTY OF THE MULHOLLAND FAMILY, LOTS 354-358

354

AN EMERALD BROOCH, CIRCA 1940
centering a cut-cornered rectangular step-cut emerald approximately: 7.49 x 5.70 x 4.45mm; *mounted in 14k white gold; dimensions: 2 1/8 x 7/8in.*

\$1,200 - 1,800

355

A DIAMOND AND EMERALD SPRAY BROOCH, CIRCA 1940
centering a round brilliant-cut diamond weighing: 1.91cts; *mounted in platinum; estimated total remaining diamond weight: 8.70cts; length: 2 1/2in.*

\$6,000 - 8,000

358

357

356

356

AN EMERALD AND DIAMOND BRACELET, CIRCA 1940
centering an old European-cut diamond weighing: 2.02cts; *mounted in 14k white gold and palladium; estimated total remaining diamond weight: 7.65cts; length: 8in.*

\$10,000 - 12,000

Accompanied by GIA report #2201459918, dated July 22, 2019 stating the diamond as: J color, VS2 clarity.

357

A DIAMOND, EMERALD, AND PLATINUM BRACELET WRISTWATCH, HAMILTON, CIRCA 1935
mechanical movement, black dial; *width: 19mm; length: 6 7/8in.; dial and movement signed*

\$3,000 - 5,000

358

A DIAMOND BROOCH
mounted in platinum; estimated total diamond weight: 1.40cts; dimensions: 1 3/4 x 1in.

\$1,500 - 2,000





359



360



362



361



363



364

367

366

365

359

A DIAMOND AND RUBY RING

centering a round brilliant-cut diamond approximately: 1.05cts; mounted in platinum; size: 7 1/4

\$1,800 - 2,200

360

A DIAMOND AND GEM-SET PENDANT EARRINGS

centering two rose-cut diamonds approximately: 1.00ct and 1.05cts; mounted in platinum; length: 2 1/8in.

\$3,000 - 5,000

361

A DIAMOND NECKLACE

mounted in 18k white gold; estimated total diamond weight: 17.25cts; gross weight approximately: 34 grams; length: 32in.

\$5,000 - 7,000

362

A SAPPHIRE AND DIAMOND RING

centering an oval brilliant step-cut sapphire weighing: 3.32cts; mounted in 18k white gold; estimated total diamond weight: 2.75cts; size: 7

\$1,800 - 2,200

Accompanied by GIA report #2201027757, dated February 13, 2019, stating the sapphire as: natural, Sri Lankan origin with evidence of heat enhancement.

363

A DIAMOND AND RUBY ETERNITY BAND

mounted in platinum; estimated total diamond weight: 5.40cts; size: 7

\$3,500 - 4,500

364

A SAPPHIRE AND DIAMOND RING

centering a pear mixed-cut sapphire weighing: 6.40cts; mounted in platinum; estimated total diamond weight: 3.20cts; size: 6 3/4

\$3,000 - 5,000

Accompanied by C. Dunaigre report #1308223, dated August 28, 2013, stating the sapphire as: Natural, Ceylon origin, no evidence of heat enhancement.

365

A SYNTHETIC RUBY AND DIAMOND BRACELET

mounted in 18k white gold; estimated total diamond weight: 1.30cts; length: 7 1/4in.

\$1,500 - 2,000

366

A SAPPHIRE AND DIAMOND BRACELET

mounted in platinum; estimated total diamond weight: 10.00cts; gross weight approximately: 75 grams; length: 7in.

\$10,000 - 12,000

367

A DIAMOND RING

centering a round brilliant-cut diamond approximately: 0.95ct; mounted in platinum; estimated total remaining diamond weight: 1.95cts; size: 6 1/4

\$1,800 - 2,500



368



369



370



372



371

368

A DIAMOND BROOCH

centering an old European-cut diamond approximately: 2.10cts; mounted in platinum; estimated remaining diamond weight: 5.25cts; gross weight approximately: 31 grams; dimensions: 2 3/4 x 2 1/2in.

\$6,000 - 8,000

369

A SAPPHIRE AND DIAMOND BI-PASS RING

mounted in platinum; estimated total diamond weight: 1.25cts; size: 4

\$3,500 - 4,500

370

A DIAMOND NECKLACE

mounted in silver; estimated total diamond weight: 7.00cts; length: 20in.

\$2,000 - 3,000

371

A TANZANITE AND DIAMOND RING

centering a cushion mixed-cut tanzanite approximately: 12.93 x 10.33 x 8.30mm; mounted in 18k white gold; estimated total diamond weight: 5.00cts; size: 8 1/4 (with sizing spring)

\$3,000 - 5,000

372

A DIAMOND RING

mounted in 18k white gold; estimated total diamond weight: 1.55cts; size: 5

\$800 - 1,200



373

373
A DIAMOND RING
mounted in 18k white gold; estimated total diamond weight: 3.25cts; size: 6 3/4
\$2,000 - 3,000



374

374
A BLACK OPAL AND DIAMOND PENDANT/BROOCH
centering an oval black opal cabochon approximately: 18.23 x 15.09 x 3.25mm; mounted in platinum; dimensions: 7/8 x 3/4in.
\$2,500 - 3,500



376

375
A RUBY, BLACK ONYX AND DIAMOND PENDANT NECKLACE
mounted in 18k white gold; 18k white gold chain; estimated total diamond weight: 2.65cts; pendant length: 3 1/4in.; chain length: 33in.
\$4,000 - 6,000

PROPERTY OF AN ENGLISH LADY

376
A RUBY AND DIAMOND RING
centering an oval mixed-cut ruby approximately: 8.80 x 6.84 x 4.38mm; mounted in 18k bi-color gold; size: 6
\$1,500 - 2,000
To be sold without reserve

375



377



378

377

AN EMERALD AND DIAMOND RING

centering a round cabochon emerald approximately: 15.13 x 15.00 x 9.61mm; mounted in 18k gold; size: 7 1/4 (with ring sizer)

\$4,500 - 5,500

PROPERTY FROM THE COLLECTION OF THE DAVIS FAMILY

378

A GOLD NECKLACE AND PENDANT EARRING SET

22k gold; weighing approximately: 94 grams; necklace length: 14 to 16in.; earring length: 2 1/4in.

\$2,000 - 3,000

Brooch consigned by The Discovery Shop in Pleasanton, Ca. All proceeds to benefit The American Cancer Society.

379

A JADEITE FLOWER BROOCH

mounted in 18k gold; dimensions: 3 x 1 1/2in.

\$2,000 - 3,000

Accompanied by Mason Kay report #190501-969, dated May 1, 2019, stating: Natural Jadeite Jade-No Dye or Impregnation Detected-'A' Jade.

All proceeds benefit the American Cancer society

380

AN EMERALD, DIAMOND AND ENAMEL NECKLACE

mounted in 18k gold; length: 18in.

\$1,200 - 1,800

381

A TSAVORITE GARNET NECKLACE

mounted in 18k gold; length: 92in.

\$3,000 - 5,000

382

AN EMERALD AND DIAMOND RING

centering an oval modified brilliant-cut emerald weighs: 5.85cts; mounted in 18k gold; size: 6 1/2

\$5,000 - 7,000

Accompanied by GIA report #2205204851, dated April 19, 2019, stating the emerald as: natural, Colombian origin, evidence of clarity enhancement (F2).

383

A PAIR GLASS EAR CLIPS

mounted in 18k gold; dimensions: 1 1/4 x 1 1/2in.

\$1,000 - 1,500



382

383

380

381

379



384
A JADEITE NECKLACE
mounted in 14k gold; length: 17in.

\$1,500 - 2,000
 To be sold without reserve

Accompanied by Mason Kay report #190221-2349, dated February 21, 2019, stating: Natural Jadeite Jade-No Dye or Impregnation detected-'A' Jade.

PROPERTY OF A LADY, LOTS 385-387

385
PAIR OF DIAMOND EAR CLIPS
mounted in 14k gold; estimated total diamond weight: 1.35cts; length: 1 1/4in.

\$2,500 - 3,500

386
A PINK TOURMALINE NECKLACE & EARCLIPS
necklace mounted in 18k gold; ear clips mounted in 14k gold; estimated gross weight: 94 grams; necklace length: 17in.; ear clip length: 1in.

387
TWO PAIRS OF GOLD EAR CLIPS
18k gold; estimated gross weight: 70 grams; ear clip lengths: 1 1/2in. and 2in.

\$3,500 - 5,500

388
PAIR OF DIAMOND RINGS
18k gold; estimated gross weight: 1.35cts; length: 1 1/4in.

\$3,000 - 5,000



388



389

390

391

**388
A PINK TOURMALINE AND DIAMOND
PENDANT WITH CHAIN**

centering a cushion mixed-cut pink tourmaline approximately: 14.44 x 10.00 x 6.54mm; mounted in 18k gold; total diamond weight: 1.50cts; length: 20in.

\$1,500 - 2,000
To be sold without reserve

**389
A DIAMOND CHAIN, POMELLATO**
converts into two bracelets; 18k bi-color gold; estimated total diamond weight: 1.40cts; gross weight approximately: 139 grams; necklace length: 15in. or two bracelet lengths: 7 1/2in. each; signed Pomellato

\$3,000 - 5,000

**390
A GOLD COIN BRACELET**
14k gold bracelet; coins approximately 21k to 22k gold; weighing approximately: 92 grams; length: 7 1/2in.

\$2,000 - 3,000

**PROPERTY FROM A LA JOLLA,
CALIFORNIA ESTATE**

**391
A GOLD HAWK PENDANT/BROOCH**
18k gold; gross weight approximately: 32 grams; dimensions: 2 3/4 x 2in.

\$800 - 1,000
To be sold without reserve



392



394



393



395



396



397

392

A PAIR OF PINK TOURMALINE, GREEN TOURMALINE AND DIAMOND PENDANT EARRINGS

mounted in 18k bi-color gold; length: 2 3/4in.

\$2,500 - 3,500

393

A 'HAREM CRYSTAL CLEAR' RING, POMELLATO

mounted in 18k gold; signed: Pomellato, no. c700050063 with Italian assay marks; size: 6 1/4

\$1,500 - 2,000

394

A GREEN BERYL AND GOLD BEAD NECKLACE

green beryl beads approximately: 6.0 to 11.0mm; 18k gold; lengths: 20in. to 22in.

\$1,000 - 1,500

PROPERTY FROM A LA JOLLA, CALIFORNIA ESTATE

395

A PAIR OF DIAMOND EAR CLIPS TOGETHER WITH AN ONYX BROOCH

mounted in 18k gold; ear clip dimensions: 7/8 x 7/8in.; brooch dimensions: 3 1/2 x 1 5/8in.

\$1,000 - 1,500

To be sold without reserve

396

A GOLD BRACELET

18k gold; weighing approximately: 66 grams; length: 7 3/4in.; width: 1 1/4in.

\$2,000 - 2,500

397

AN EMERALD AND DIAMOND RING

centering a rectangular carved emerald approximately: 11.84 x 9.85 x 4.58mm; mounted in 18k gold; total diamond weight: 1.20cts; size: 7

\$1,500 - 2,000

To be sold without reserve



398

398

A DIAMOND RING, BVLGARI

mounted in 18k gold; estimated total diamond weight: 1.60cts; size: 7; signed Bvlgari

\$3,500 - 4,500

399

399

A PAIR OF SAPPHIRE AND DIAMOND PENDANT EARRINGS

mounted in 18k gold; estimated total diamond weight: 1.55cts; length: 1 3/8in.

\$2,200 - 2,600

400

400

A SAPPHIRE AND DIAMOND NECKLACE

mounted in 18k gold; estimated total diamond weight: 8.35cts; gross weight approximately: 62 grams; length: 17in.

\$4,500 - 5,500

401

401

A DIAMOND RING

mounted in 14k gold; estimated total diamond weight: 3.00cts; size: 4 (with hinged shank)

\$1,500 - 2,000



402



403



404



405

402
A SAPPHIRE RING WITH A SAPPHIRE AND DIAMOND RING

mounted in 18k gold; sizes: 7 1/4 and 8

\$1,200 - 1,800
To be sold without reserve

403
A DIAMOND 'HAPPY SPIRIT' NECKLACE, CHOPARD

mounted in 18k gold; length: 17in.; signed Chopard, no. 8020667

\$1,500 - 2,000

PROPERTY FROM THE COLLECTION OF THE DAVIS FAMILY, LOTS 404 AND 405

404
A SAPPHIRE AND DIAMOND FLOWER PENDANT/BROOCH, OSCAR HEYMAN & BROTHERS

mounted in 18k gold; estimated total diamond weight: 7.00cts; dimensions: 1 1/2 x 1 1/2in.; with maker's marks, no. 72720

\$5,000 - 7,000

405
A DIAMOND DATEJUST WRISTWATCH, ROLEX

automatic movement; mounted in 18k Gold; estimated total diamond weight: 1.35cts; gross weight approximately: 73 grams; width: 25mm; length: 6 1/2in.; case, dial, and movement signed; numbered 69138 and 8432109

\$5,000 - 7,000



406

407

409

410

408

406

AN EN TREMBLANT DIAMOND BROOCH AND EAR CLIP SET

mounted in 18k gold; estimated total diamond weight: 1.30cts; gross weight approximately: 41 grams; ear clip length: 1 1/4in.; brooch dimensions : 2 x 1 1/2in.

\$2,000 - 3,000

PROPERTY FROM A LA JOLLA, CALIFORNIA ESTATE, LOTS 407 AND 408

407

A COLORED CULTURED PEARL AND DIAMOND RING, TAMBETTI

pearl approximately: 14.5mm; mounted in 18k gold; estimated total diamond weight: 1.50cts; size: 6; signed Tambetti (grey pearl untested for origin of color)

\$1,500 - 2,000

408

A COLORED CULTURED PEARL NECKLACE AND CLIP

pearls approximately: 8.0 to 13.0mm; mounted in 18k gold; necklace length: 16 1/2in.; clip dimensions: 1 3/4 x 1 3/4in. (black pearls untested for origin of color)

\$2,000 - 3,000

409

AN OPAL AND DIAMOND PENDANT WITH CHAIN

centering an oval cabochon opal approximately: 24.48 x 19.93 x 8.52mm; mounted in 18k gold; length: 19in.

\$2,000 - 3,000

410

A GOLD 'DIABOLO' WRISTWATCH WITH BRACELET, CARTIER

quartz movement; 18k gold; gross weight approximately: 86 grams; width: 30mm; length: 6 1/4in.; case, dial, and movement signed, numbered 1440 C86741

\$5,500 - 6,500



411

411
A LAVENDER JADE, COLORED CULTURED PEARL AND AMETHYST NECKLACE AND EARRING SET, MIMI MILANO
mounted in 18k rose gold; necklace length: 19in.; earring length: 2in.; with maker's mark, with signed box
\$1,500 - 2,500

413
A GREEN TOURMALINE AND DIAMOND RING, TIFFANY & CO.
centering a cushion mixed-cut green tourmaline approximately: 15.31 x 14.57 x 11.92mm; mounted in 18k gold; estimated total diamond weight: 5.25cts; size: 5; signed Tiffany & Co.

\$4,000 - 6,000



412

414
A PAIR OF GOLD AND DIAMOND BANDS, BUCCELLATI, ITALIAN
mounted in 18k white gold and 18k gold; sizes: 6 1/4 and 6 1/2; signed Buccellati, Italy, no. 03603 and 05707
\$3,000 - 5,000



414

412
A LADY'S GOLD AND STAINLESS STEEL WATCH, BVLGARI
quartz movement; 18k gold; gross weight approximately: 48 grams; case width 24mm; length: 6 in.; case and dial signed, case stamped BB262TG D313842
\$1,800 - 2,200



415

415
A PAIR OF DIAMOND 'SWIRL' EAR CLIPS, TIFFANY & CO.
mounted in platinum; estimated total diamond weight: 1.95cts; diameter: 3/4in.; signed Tiffany & Co.

\$4,500 - 5,500

416

416
A DIAMOND RING, CIRCA 1940
centering an old european-cut diamond weighing: 2.06cts; mounted in platinum; size: 6 1/4

\$6,000 - 8,000

417
THREE DIAMOND BRACELETS
mounted in 18k white gold; estimated total diamond weight: 4.60cts; lengths: 7in., 7in. and 7 1/2in.

\$2,500 - 4,500

418

418
A 'CAMELIA' AGATE NECKLACE AND RING SET, CHANEL
mounted in 18k white gold; length: 20in.; ring size: 5; signed: Chanel no. V12038 and 6P2142; with French assay marks

\$3,000 - 5,000



419



421



422

420

419

A COLORED SAPPHIRE AND DIAMOND BUTTERFLY BROOCH

mounted in 18k white gold; estimated total diamond weight: 1.20cts; dimensions: 2 x 2 5/8in.

\$1,750 - 2,250

420

A DIAMOND COLLAR

mounted in 18k white gold; estimated total diamond weight: 4.25cts; gross weight approximately: 52 grams; length: 18in.

\$2,500 - 3,500

421

A YELLOW SAPPHIRE CROSS PENDANT AND 18K WHITE GOLD AND DIAMOND CROSS PENDANT

mounted in 18k white gold; dimensions: 1 1/4 x 3/4in.

\$1,500 - 2,500

422^Y

A PAIR OF CORAL AND DIAMOND EAR CLIPS

mounted in 18k white gold; estimated total diamond weight: 1.25cts; dimensions: 3/4 x 3/4in.

\$1,000 - 1,500



423



425



425



424



426

423

A COLORED DIAMOND AND DIAMOND PENDANT NECKLACE

mounted in 18k bi-color gold; pendant dimensions: 1 1/4 x 1in.; chain length: 18in.

\$2,500 - 4,500

424

A DIAMOND AND STEEL WRISTWATCH, HERMÈS

quartz movement; estimated total diamond weight: 2.75cts; case width: 34mm; case, dial, and movement signed, numbered HH1.830 2149364

\$4,500 - 5,500

425

A GEM-SET 'GOLD STRUCK' NECKLACE, EAR CLIPS AND DOUBLE RING SUITE, STEPHEN WEBSTER

mounted in 18k white gold; necklace length: 31in.; ear clip dimensions: 1 1/4 x 3/4in.; ring sizes: 6 3/4 and 5 3/4; signed with maker's mark, with English hallmarks; with signed box

\$3,000 - 5,000

426

AN AQUAMARINE AND DIAMOND RING

centering a cut-cornered rectangular step-cut aquamarine approximately: 16.50 x 12.70 x 9.80mm; mounted in platinum; size: 4 1/4

\$1,000 - 1,500



427



428



429



431



430

427

A DIAMOND PENDANT NECKLACE

mounted in 18k white gold; on adjustable black cord; estimated total diamond weight: 1.50cts; pendant dimensions: 1 3/4 x 1 1/2in.; cord length: 30in.

\$3,800 - 5,800

428

A COLORED DIAMOND AND DIAMOND PENDANT NECKLACE

mounted in 18k bi-color gold; length: 16in.

\$2,000 - 3,000

429

A DIAMOND LONG CHAIN

mounted in 18k white gold; estimated total diamond weight: 6.90cts; length: 58in.

\$3,000 - 5,000

430

A RUBELLITE, COLORED DIAMOND AND DIAMOND 'SCORPION' RING, MAGERIT

mounted in 18k bi-color gold; estimated total diamond weight: 1.05cts; size: 6 3/4; signed with maker's mark; with signed box

\$4,000 - 7,000

431

A TANZANITE AND DIAMOND RING

centering a cushion mixed-cut tanzanite approximately: 7.50 x 10.00 x 4.79mm; mounted in 18k white gold; total diamond weight: 1.15cts; size: 6

\$2,000 - 3,000



432



433



434



435



436

432
**A DIAMOND AND PLATINUM RING WITH
A PAIR OF DIAMOND AND 18K WHITE
GOLD BANDS**

centering a trillion-cut diamond weighing:
2.06cts; estimated total remaining diamond
weight: 2.70cts; sizes: 5 3/4 and 6

\$4,000 - 6,000

433
**A DIAMOND HEART BROOCH, TIFFANY
& CO.**

mounted in platinum; estimated total
diamond weight: 1.00ct; dimensions: 7/8 x
7/8in.; signed Tiffany & Co.

\$1,000 - 1,500
To be sold without reserve

434
A DIAMOND BRACELET
mounted in platinum; estimated total
diamond weight: 13.00cts; length: 6 1/2in.

\$8,500 - 12,000

435
A PINK SPINEL RING
centering an oval mixed-cut pink spinel
approximately: 10.91 x 9.07 x 7.28mm;
mounted in platinum; size: 6 1/2

\$2,500 - 3,500

436
A PAIR OF DIAMOND EAR CLIPS,
mounted in 18k white gold; estimated total
diamond weight: 5.15cts; dimensions: 1 1/14
x 1 1/8in.

\$2,000 - 3,000

Formerly from the Estate of Jackie Collins.



438

437

440

439

(front view)

(side view)

437

A PAIR OF PINK SAPPHIRE AND DIAMOND PENDANT EARRINGS

mounted in rhodium plated 18k white gold; estimated total diamond weight: 2.40cts; dimensions: 1 1/2 x 1 in.

\$5,000 - 7,000

PROPERTY OF A HOLLYWOOD HILLS, CALIFORNIA COLLECTOR

438

A DIAMOND FESTOON NECKLACE

mounted in 18k white gold; estimated total diamond weight: 13.25cts; estimated gross weight: 42 grams; length: 15in.

\$5,000 - 7,000

439

A DIAMOND RING, TIFFANY & CO.

mounted in platinum; estimated total diamond weight: 2.50cts; size: 5; signed Tiffany & Co.

\$1,500 - 2,000

440

A PINK SAPPHIRE AND DIAMOND RING

centering a pear modified brilliant step-cut pink sapphire weighs: 3.81cts; mounted in rhodium plated 18k white gold; size: 6

\$1,200 - 1,500

Accompanied by GIA report #2205295167, dated May 22, 2019, stating the pink sapphire as: natural, Madagascar origin, evidence of heat enhancement.



441



442



443



444

441

A DIAMOND NECKLACE

centering a pear brilliant-cut diamond approximately: 2.00cts; mounted in platinum; estimated remaining diamond weight: 1.15cts; length: 16in.

\$4,000 - 6,000

442

A SEMI-BLACK OPAL AND DIAMOND RING

centering an oval double cabochon semi-black opal approximately: 17.70 x 14.10 x 10.16mm; mounted in 14k white gold; size: 5 1/2

\$1,500 - 2,000

PROPERTY OF A LOS ANGELES LADY

443

A DIAMOND RING

centering a square modified brilliant-cut diamond weighing: 3.03cts; mounted in rhodium plated 14k gold; estimated total remaining diamond weight: 1.05cts; size: 6

\$20,000 - 25,000

Accompanied by GIA report #6194900160, dated December 04, 2018, stating the diamond as: I color, VS2 clarity.

PROPERTY OF A THOUSAND OAKS, CALIFORNIA COLLECTOR

444

AN AMETHYST AND DIAMOND NECKLACE/BROOCH AND BRACELET SET

amethyst beads approximately: 8.0 to 8.2mm; mounted in 14k white gold; estimated total diamond weight: 1.50cts; necklace length: 13 1/2 and 14in.; bracelet length: 7 1/4; clasp/pendant/brooch dimensions: 1 7/8 x 1 1/2in.

\$1,500 - 2,000



445

445

AN EMERALD AND DIAMOND RING

centering a square emerald-cut emerald approximately: 11.71 x 11.63 x 5.62mm; mounted in rhodium plated 18k white gold; estimated total diamond weight: 1.00ct; size: 7 1/2

\$4,000 - 7,000

Accompanied by AGL report #1097286, dated December 7, 2018, stating the Emerald as: Colombian origin, minor modern clarity enhancement.

446

A JADEITE AND DIAMOND RING

round cabochon jadeite approximately: 8.23 x 7.94 x 4.57mm; mounted in white gold; size: 5 3/4

\$1,800 - 2,500

To be sold without reserve

Accompanied by Mason Kay report #181109-458, dated November 9, 2018, stating: Natural Jadeite Jade-No Dye or polymer detected-'A' Jade.

447

447

A DIAMOND BRACELET WITH A PAIR OF DIAMOND EAR CLIPS

mounted in 14k white gold; estimated total diamond weight: 5.12cts; bracelet length: 7 3/4in.; ear clip length: 3/4in.

\$2,000 - 3,000

448

448

AN OPAL AND DIAMOND RING AND STUD EARRING SET

mounted in 14k white gold; estimated total diamond weight: 1.75cts; ring size: 8; earring diameter: 5/8in.

\$1,500 - 2,000



450



451



449



452



453



454



455



456

457

449

A DIAMOND TEDDY BEAR BROOCH
mounted in 18k gold; estimated total diamond weight: 5.05cts; length: 1 1/2in.

\$2,000 - 3,000

450

A WOVEN GOLD BRACELET
18k gold; weighing approximately: 55 grams; length: 7 1/2in.; width: 1 3/5in.

\$2,000 - 2,500

451

AN EMERALD AND DIAMOND RING
centering a cut-cornered rectangular step-cut emerald approximately: 9.95 x 7.39 x 4.47mm; mounted in 18k gold; size: 5

\$3,000 - 5,000

452

A PAIR OF MABÉ PEARL AND DIAMOND EAR CLIPS, FRENCH
mabé pearls approximately: 18.8 to 19.3mm; mounted in 18k bi-color gold; estimated total diamond weight: 1.50cts; diameter: 1in.; no. 30212, with French assay marks

\$1,500 - 3,000

453

AN EMERALD AND DIAMOND RING
centering an oval cabochon emerald approximately: 12.60 x 9.56mm; mounted in 18k gold; size: 7 1/2

\$1,500 - 2,000

PROPERTY FROM AN ESTATE OF A LOS ANGELES LADY

454

A DIAMOND AND RUBY CLIP, MCTEIGUE
mounted in 18k gold and platinum; estimated total diamond weight: 2.20cts; dimensions: 2 x 1 1/2in.; with maker's mark

\$1,500 - 2,000
To be sold without reserve

455

A GOLD DATE WRISTWATCH, ROLEX
automatic movement; 18k gold; gross weight approximately: 54 grams; case width: 25mm; length 6 1/4in.; case numbered 1638414, Ref. 43415, dial and movement signed

\$3,500 - 4,500

456

A PAIR OF LAPIS LAZULI AND DIAMOND EAR CLIPS, TIFFANY & CO., 1985
mounted in 18k bi-color gold; dimensions: 3/4 x 3/4in.; signed Tiffany & Co., 1985.

\$2,500 - 3,500

PROPERTY OF A CALABASAS, CALIFORNIA COLLECTOR

457

A SAPPHIRE, RUBY AND DIAMOND NECKLACE, LALAOUNIS
mounted in 18k gold; 14k gold chain extension; gross weight approximately: 111 grams; length: 14 1/2in.; signed Lalaounis; with signed pouch

\$6,000 - 8,000



458



459



460



461

458
**A PAIR OF LAPIS LAZULI, OPAL, AND
TOURMALINE EAR CLIPS**

mounted in 18k gold; length: 1 1/8in.

\$1,200 - 1,500

459
A DIAMOND BYPASS RING
*mounted in 18k gold; estimated total
diamond weight: 1.95cts; size: 5 1/4*

\$2,500 - 3,500

460
**A CITRINE, YELLOW SAPPHIRE AND
DIAMOND BRACELET**
*mounted in 18k gold and platinum; estimated
total diamond weight: 3.50cts; gross weight
approximately: 123 grams; length: 8in.;
width: 1in.*

\$5,000 - 7,000

461
**A CAT'S-EYE CHRYSOBERYL AND
DIAMOND BROOCH**
*mounted in 14k gold; estimated total
diamond weight: 1.10cts; gross weight
approximately: 30 grams; diameter: 2 1/4in.*

\$3,000 - 5,000

462
A CITRINE RING, MIMI MILANO
*mounted in 18k bi-color gold; size: 6 1/2;
signed with maker's mark; with signed box*

\$1,400 - 1,800

463
A CITRINE HEART PENDANT NECKLACE
*centering a heart brilliant-cut citrine
measuring approximately: 9.86 x 10.92 x
6.63mm; mounted in 18k gold; 14k gold
chain; length: 20 3/4in.*

\$1,000 - 1,500

464
A LAPIS LAZULI BEAD NECKLACE
*beads approximately: 20.0 to 28.0mm; silver
clasp; length: 22 1/2in.*

\$2,000 - 3,000

465
**A PAIR OF YELLOW SAPPHIRE AND
DIAMOND PENDANT EARRINGS**
*mounted in 18k gold; estimated total
diamond weight: 4.10cts; length: 1 3/4in.*

\$5,000 - 8,000



462



463



464



465



466



467

**PROPERTY FROM A NEW MEXICO
ESTATE, LOTS 466-471**

466

**A PAIR OF CULTURED PEARL
EARCLIPS, LALAOUNIS, GREEK**

*mounted in 18k gold; dimensions: 1 1/2 x 1
1/2in.; signed with maker's mark, Greece*

\$2,000 - 3,000

467

**A TURQUOISE, LAPIS LAZULI AND
SUGILITE BEAD NECKLACE**

14k gold clasp; length: 16in.

\$1,000 - 1,500

468

**A GOLD PENDANT NECKLACE,
LALAOUNIS**

*18k gold; weighing approximately 119 grams;
chain length: 33in.; pendant dimensions: 3
x 2 3/4in.; signed Lalaounis, with maker's
mark; with signed box*

\$3,000 - 5,000

469

A GOLD CUFF, LALAOUNIS

*18k gold; weighing approximately 62 grams;
diameter: 2 1/2in.; signed Ilias lalaounis*

\$3,000 - 5,000



468

469



470



471

470^Y

**AN ENAMEL AND GEM-SET BRACELET,
EARL PARDON**

*mounted in sterling silver and 14k gold;
length: 7 1/2in.; width: 1in.; signed Pardon*

\$3,000 - 5,000

A bracelet of similar design exhibited at the
Museum of Fine Arts, Houston.

471

A GOLD NECKLACE, TIFFANY & CO.

*18k gold; weighing approximately: 51 grams;
length: 30in.; signed Tiffany*

\$1,200 - 1,500





472



473



474

**PROPERTY FROM A LONG ISLAND,
NEW YORK ESTATE, LOTS 472-475**

472

**A DIAMOND BROOCH, VAN CLIEF,
CIRCA 1950**

*mounted in platinum; estimated total
diamond weight: 5.50cts; dimensions: 1 7/8
x 1 3/5in.; partial signature for Van Clief*

\$3,000 - 5,000

473

A DIAMOND BRACELET

*mounted in 18k gold; estimated total
diamond weight: 2.35cts; gross weight
approximately: 94 grams; length: 6 3/4in.*

\$3,000 - 5,000

474

A TURQUOISE AND DIAMOND RING

*centering a rectangular mixed-cut cabochon
turquoise approximately: 17.12 x 14.62 x
11.12mm; mounted in 14k gold; estimated
total diamond weight: 4.10cts; size: 5 3/4*

\$4,000 - 6,000



475

475

**A RUBY SNAKE NECKLACE AND PAIR
OF EAR CLIPS, ZOLOTAS, GREEK**

*mounted in 18k gold; gross weight
approximately: 137 grams; necklace length:
15in.; ear clip dimensions: 1 1/2 x 1 1/4in.;
signed Greece with maker's marks*

\$8,000 - 10,000

Bonhams

AUCTIONEERS SINCE 1793



Prints & Multiples

Los Angeles | October 15, 2019 | 10am

PREVIEW

October 11-14, 2019

INQUIRIES

+1 (323) 436 5435

+1 (415) 503 3259

prints.us@bonhams.com

[bonhams.com/prints](https://www.bonhams.com/prints)

ANDY WARHOL (1928-1987)

Marilyn Monroe (F. & S. II.26), 1967

Screenprint in colors

\$60,000 - 80,000

Bonhams

AUCTIONEERS SINCE 1793



Modern Design | Art

Los Angeles | October 27, 2019

INQUIRIES

+ 1 323-436-5466
jason.stein@bonhams.com
[bonhams.com/MDS](https://www.bonhams.com/MDS)

ARTHUR ESPENET CARPENTER
(1920-2006)

Roll Top Desk, 1976
\$25,000-35,000

Conditions of sale

The following Conditions of Sale, as amended by any published or posted notices or verbal announcements during the sale, constitute the entire terms and conditions on which property listed in the catalog shall be offered for sale or sold by Bonhams & Butterfields Auctioneers Corp. and any consignor of such property for whom Bonhams acts as agent. By participating in this sale, you agree to be bound by these terms and conditions.

If live online bidding is available for the subject auction, additional terms and conditions of sale relating to online bidding will apply; see www.bonhams.com/WebTerms for the supplemental terms. As used herein, "Bonhams," "we" and "us" refer to Bonhams & Butterfields Auctioneers Corp.

1. As used herein, the term "bid price" means the price at which a lot is successfully knocked down to the buyer. The term "purchase price" means the aggregate of (a) the bid price, (b) a PREMIUM retained by us and payable by the buyer (the "buyer's premium"), EQUAL TO 27.5% OF THE FIRST \$3,000 OF THE BID PRICE, 25% OF THE AMOUNT OF THE BID PRICE ABOVE \$3,000 UP TO AND INCLUDING \$400,000, 20% OF THE AMOUNT OF THE BID PRICE ABOVE \$400,000 UP TO AND INCLUDING \$4,000,000, AND 13.9% OF THE AMOUNT OF THE BID PRICE OVER \$4,000,000, and (c) unless the buyer is exempt by law from the payment thereof, any Alabama, Arizona, California, Colorado, Connecticut, Florida, Georgia, Hawaii, Idaho, Illinois, Iowa, Indiana, Kentucky, Louisiana, Maine, Massachusetts, Michigan, Minnesota, Nevada, New Jersey, New York, North Carolina, Ohio, Pennsylvania, Rhode Island, Texas, Utah, Virginia, Washington, D.C., Washington, Wisconsin, Wyoming or other state or local sales tax (or compensating use tax) and other applicable taxes. With regard to New York sales tax, please refer to the "Sales and Use Tax" section of these Conditions of Sale.

2. In order to bid at the sale, prospective bidders must submit to Bonhams a completed bidder registration form (appearing at the end of this catalog) and any other requested information or references. New bidders and bidders who have not recently updated their registration information must pre-register to bid at least two business days before the sale. Individuals will be required to provide government-issued proof of identity and proof of address. Entity clients will be required to provide documentation including confirmation of entity registration showing the registered name, confirmation of registered address, documentary proof of officers and beneficial owners, proof of authority to transact on behalf of the entity and government-issued proof of identity for the individual who is transacting on the entity's behalf.

We may also request a financial reference and /or deposit from bidders before approving the bidder registration. In the event a deposit is submitted and you are not the successful bidder, your deposit will be returned to you. If you are the successful bidder, any such deposit will be credited to offset the appropriate portion of the purchase price.

We reserve the right to request further information, including regarding the source of funds, in order to complete bidder identification and registration procedures (including completing any anti-money laundering and/or anti-terrorism financing checks we may require) to our satisfaction. If our bidder identification and registration procedures are not satisfied, we may, in our sole discretion, decline to register any bidder or reject any bid or cancel any sale to such bidder.

Every bidder shall be deemed to act as a principal unless prior to the commencement of the sale there is a written acceptance by Bonhams of a bidder registration form completed and signed by the principal which clearly states that the authorized bidding agent is acting on behalf of the named principal. Absent such written acceptance by Bonhams, any person placing a bid as agent on behalf of another (whether or not such person has disclosed that fact or the identity of the principal) may be jointly and severally liable with the principal under any contract resulting from the acceptance of a bid. Every bidder shall be responsible for

any use of its assigned paddle or bidding account, regardless of the circumstances.

3. You represent and warrant that: (i) you have provided us with true and correct copies of valid identification and proof of residence and, if applicable, financial and/or corporate documents; (ii) neither you, your principal (if applicable, and subject to Bonhams' prior written acceptance pursuant to paragraph 2 above), nor any individual or entity with a beneficial or ownership interest in either or in the purchase transaction is on the Specially Designated Nationals List maintained by the Office of Foreign Assets Control of the U.S. Department of the Treasury nor subject to any other sanctions or embargo program or regulation in effect in the United States, European Union, England and Wales, or other applicable jurisdictions; (iii) if you are acting as an agent for a principal, you have conducted appropriate due diligence into such principal, and agree that Bonhams shall be entitled to rely upon such due diligence, you will retain adequate records evidencing such due diligence for a period of five (5) years following the consummation of the sale, and will make these records available for inspection upon Bonhams' request; (iv) neither the purchase transaction (including your bidding activity) nor the purchase funds are connected with nor derive from any criminal activity, and they are not designed to nor have they or shall they, violate the banking, anti-money laundering, or currency transfer laws or other regulations (including without limitation, import-export laws) of any country or jurisdiction, or further any other unlawful purpose, including without limitation collusion, anti-competitive activity, tax evasion or tax fraud.

You acknowledge and agree that we may rely upon the accuracy and completeness of the foregoing warranties.

4. On the fall of the auctioneer's hammer, the highest bidder shall have purchased the offered lot in accordance and subject to compliance with all of the conditions set forth herein and (a) assumes full risk and responsibility therefor, (b) if requested will sign a confirmation of purchase, and (c) will pay the purchase price in full or such part as we may require for all lots purchased. No lot may be transferred.

Unless otherwise agreed, payment in good, cleared funds is due and payable within five (5) business days following the auction sale. Whenever the buyer pays only a part of the total purchase price for one or more lots purchased, we may apply such payments, in our sole discretion, to the lot or lots we choose. Payment will not be deemed made in full until we have received good, cleared funds for all amounts due. Title in any purchased property will not pass until full and final payment has been received by Bonhams. Accounts must be settled in full before property is released to the buyer. In the event property is released earlier, such release will not affect the passing of title or the buyer's obligation to timely remit full payment.

We reserve the right to refuse to accept payment from a source other than the registered bidder or buyer of record. Once an invoice is issued, we cannot change the buyer's name on an invoice.

Payment for purchases must be made in the currency in which the sale is conducted and may be made in or by (a) cash, up to the amount of US \$5,000 (whether by single or multiple related payments), or the equivalent in the currency in which the sale is conducted, (b) cashier's check or money order, (c) personal check with approved credit drawn on a U.S. bank, (d) wire transfer or other immediate bank transfer, or (e) Visa, MasterCard, American Express or Discover credit, charge or debit card, provided that the registered bidder or buyer's name is printed on the card. A processing fee will be assessed on any returned checks.

To the fullest extent permitted by applicable law, the buyer grants us a security interest in the property, and we may retain as collateral security for the buyer's obligations to us, any property and all monies held or received by us for the account of the buyer, in our possession. We also retain all rights of a secured party under the California Commercial

Code, and you agree that we may file financing statements without your signature. If the foregoing conditions or any other applicable conditions herein are not complied with, in addition to all other remedies available to us and the consignor by law, we may at our election: (a) hold the buyer liable for the full purchase price and any late charges, collection costs, attorneys' fees and costs, expenses and incidental damages incurred by us or the consignor arising out of the buyer's breach; (b) cancel the sale, retaining as liquidated damages all payments made by the buyer; and/or (c) cancel the sale and/or resell the purchased property, at public auction and/or by private sale, and in such event the buyer shall be liable for the payment of all consequential damages, including any deficiencies or monetary losses, and all costs and expenses of such sale or sales, our commissions at our standard rates, all other charges due hereunder, all late charges, collection costs, attorneys' fees and costs, expenses and incidental damages. In addition, where two or more amounts are owed in respect of different transactions by the buyer to us, to Bonhams 1793 Limited and/or to any of our other affiliates, subsidiaries or parent companies worldwide within the Bonhams Group, we reserve the right to apply any monies paid in respect of a transaction to discharge any amount owed by the buyer. If all fees, commissions, premiums, bid prices and other sums due to us from the buyer are not paid promptly as provided in these Conditions of Sale, we reserve the right to impose a finance charge equal to 1.5% per month (or, if lower, the maximum nonusurious rate of interest permitted by applicable law), on all amounts due to us beginning on the 31st day following the sale until payment is received, in addition to other remedies available to us by law.

5. We reserve the right to withdraw any property and to divide and combine lots at any time before such property's auction. Unless otherwise announced by the auctioneer at the time of sale, all bids are per lot as numbered in the catalog and no lots shall be divided or combined for sale.

6. We reserve the right to reject a bid from any bidder, to split any bidding increment, and to advance the bidding in any manner the auctioneer may decide. In the event of any dispute between bidders, or in the event the auctioneer doubts the validity of any bid, the auctioneer shall have sole and final discretion either to determine the successful bidder, re-open the bidding, or to cancel the sale and re-offer and resell the article in dispute. If any dispute arises after the sale, our sales records shall be conclusive in all respects.

We further reserve the right to cancel the sale of any property if (i) you are in breach of your representations and warranties as set forth in paragraph 3 above; (ii) we, in our sole discretion, determine that such transaction might be unlawful or might subject Bonhams or the consignor to any liability to any third party; or (iii) there are any other grounds for cancellation under these Conditions of Sale.

7. If we are prevented by fire, theft or any other reason whatsoever from delivering any property to the buyer or a sale otherwise cannot be completed, our liability shall be limited to the sum actually paid therefor by the buyer and shall in no event include any compensatory, incidental or consequential damages.

8. All lots in the catalog are offered subject to a reserve unless otherwise indicated in the catalog. The reserve is the confidential minimum bid price at which such lot will be sold and it does not to exceed the low estimate value for the lot. If a lot is offered subject to a reserve, we may implement such reserve by bidding on behalf of the consignor, whether by opening bidding or continuing bidding in response to other bidders until reaching the reserve. If we have an interest in an offered lot and the proceeds therefrom other than our commissions, we may bid up to the reserve to protect such interest. If the auctioneer determines that any opening or subsequent bid is below the reserve for a lot, (s)he may reject such opening bid and withdraw the item from sale. **CONSIGNORS ARE NOT ALLOWED TO BID ON THEIR OWN ITEMS.**

Conditions of sale - Continued

9. Other than as provided in the Limited Right of Rescission with respect to identification of authorship, all property is sold "AS IS" and any statements contained in the catalog or in any advertisement, bill of sale, announcement, condition report, invoice or elsewhere as to period, culture, source, origin, media, measurements, size, quality, rarity, provenance, importance, exhibition and literature of historical relevance, merchantability, fitness for a particular purpose, or physical condition ARE QUALIFIED STATEMENTS OF OPINION AND NOT REPRESENTATIONS, WARRANTIES, OR ASSUMPTION OF LIABILITY. Neither Bonhams nor the consignor shall be responsible for any error or omission in the catalog description of any property. No employee or agent of Bonhams is authorized to make on our behalf or on that of the consignor any representation or warranty, oral or written, with respect to any property.

10. All purchased property shall be removed from the premises at which the sale is conducted by the date(s) and time(s) set forth in the "Buyer's Guide" portion of this catalog. If not so removed, daily storage fees will be payable to us by the buyer as set forth therein. We reserve the right to transfer property not so removed to an offsite warehouse at the buyer's risk and expense, as set forth in more detail in the "Buyer's Guide." Packing and handling of purchased lots are the responsibility of the buyer and at the buyer's entire risk, as are the identification, application for, and cost(s) of obtaining of any necessary export, import, restricted material (e.g. endangered species) or other permit for such lots.

For an additional fee, Bonhams may provide packing and shipping services for certain items as noted in the "Buyer's Guide" section of the catalog.

11. The copyright in the text of the catalog and the photographs, digital images and illustrations of lots in the catalog belong to Bonhams or our licensors. You will not reproduce or permit anyone else to reproduce such text, photographs, digital images or illustrations without our prior written consent. Bonhams and the consignor make no representation or warranty as to whether the buyer acquires any copyrights on the purchase of an item of Property.

12. Bonhams may, in our discretion, as a courtesy and free of charge, execute bids on your behalf if so instructed by you, provided that neither Bonhams nor our employees or agents will be liable for any error or default (whether human or otherwise) in doing so or for failing to do so. Without limiting the foregoing, Bonhams (including our agents and employees) shall not be responsible for any problem relating to telephone, online, or other bids submitted remotely through any means, including without limitation, any telecommunications or internet fault or failure, or breakdown or problems with any devices or online platforms, including third-party online platforms, regardless of whether such issue arises with our, your, or such third-party's technology, equipment, or connection. By participating at auction by telephone or online, bidders expressly consent to the recording of their bidding sessions and related communications with Bonhams and our employees and agents, and acknowledge their acceptance of these Conditions of Sale as well as any additional terms and conditions applicable to any such bidding platform or technology.

13. These Conditions of Sale shall bind the successors and assigns of all bidders and buyers and inure to the benefit of our successors and assigns. No waiver, amendment or modification of the terms hereof (other than posted notices or oral announcements during the sale) shall bind us unless specifically stated in writing and signed by us. No act or omission of Bonhams, its employees or agents, nor any failure thereof to exercise any remedy hereunder, shall operate or be deemed to operate as a waiver of Bonhams' rights under these Conditions of Sale. If any part of these Conditions of Sale is for any reason invalid or unenforceable, the rest shall remain valid and enforceable.

14. These Conditions of Sale and the buyer's and our respective rights and obligations hereunder shall be governed

by and construed and enforced in accordance with the laws of the State of California. Any dispute, controversy or claim arising out of or relating to this agreement, or the breach, termination or validity thereof, brought by or against Bonhams (but not including claims brought against the consignor by the buyer of lots consigned hereunder) shall be resolved by the procedures set forth below.

15. You accept and agree that Bonhams will hold and process your personal information and may share and use it as required by law and as described in, and in line with Bonhams' Privacy Policy, available at website at www.bonhams.com/legals/. If you desire access, update, or restriction to the use of your personal information, please email data.protection@bonhams.com.

SALES AND USE TAX

New York sales tax is charged on the hammer price, buyer's premium and any other applicable charges on any property collected or delivered in New York State, regardless of the state or country in which the buyer resides or does business. Buyers who make direct arrangements for collection by a shipper who is considered a "private" or "contract" carrier by the New York Department of Taxation and Finance will be charged New York sales tax, regardless of the destination of the property. Property collected for delivery to a destination outside of New York by a shipper who is considered a "common carrier" by the New York Department of Taxation and Finance (e.g. United States Postal Service, United Parcel Service, and FedEx) is not subject to New York sales tax, but if it is delivered into any state in which Bonhams is registered or otherwise conducts business sufficient to establish a nexus, Bonhams may be required by law to collect and remit the appropriate sales tax in effect in such state. Property collected for delivery outside of the United States by a freight forwarder who is registered with the Transportation Security Administration ("TSA") is not subject to New York sales tax.

MEDIATION AND ARBITRATION PROCEDURES

(a) Within 30 days of written notice that there is a dispute, the parties or their authorized and empowered representatives shall meet by telephone and/or in person to mediate their differences. If the parties agree, a mutually acceptable mediator shall be selected and the parties will equally share such mediator's fees. The mediator shall be a retired judge or an attorney familiar with commercial law and trained in or qualified by experience in handling mediations. Any communications made during the mediation process shall not be admissible in any subsequent arbitration, mediation or judicial proceeding. All proceedings and any resolutions thereof shall be confidential, and the terms governing arbitration set forth in paragraph (c) below shall govern.

(b) If mediation does not resolve all disputes between the parties, or in any event no longer than 60 days after receipt of the written notice of dispute referred to above, the parties shall submit the dispute for binding arbitration before a single neutral arbitrator. Such arbitrator shall be a retired judge or an attorney familiar with commercial law and trained in or qualified by experience in handling arbitrations. Such arbitrator shall make all appropriate disclosures required by law. The arbitrator shall be drawn from a panel of a national arbitration service agreed to by the parties, and shall be selected as follows: (i) If the national arbitration service has specific rules or procedures, those rules or procedures shall be followed; (ii) If the national arbitration service does not have rules or procedures for the selection of an arbitrator, the arbitrator shall be an individual jointly agreed to by the parties. If the parties cannot agree on a national arbitration service, the arbitration shall be conducted by the American Arbitration Association, and the arbitrator shall be selected in accordance with the Rules of the American Arbitration Association. The arbitrator's award shall be in writing and shall set forth findings of fact and legal conclusions.

(c) Unless otherwise agreed to by the parties or provided by the published rules of the national arbitration service:

(i) the arbitration shall occur within 60 days following the selection of the arbitrator;

(ii) the arbitration shall be conducted in the designated location, as follows: (A) in any case in which the subject auction by Bonhams took place or was scheduled to take place in the State of New York or Connecticut or the Commonwealth of Massachusetts, the arbitration shall take place in New York City, New York; (B) in all other cases, the arbitration shall take place in the city of San Francisco, California; and

(iii) discovery and the procedure for the arbitration shall be as follows:

(A) All arbitration proceedings shall be confidential;

(B) The parties shall submit written briefs to the arbitrator no later than 15 days before the arbitration commences;

(C) Discovery, if any, shall be limited as follows: (i) Requests for no more than 10 categories of documents, to be provided to the requesting party within 14 days of written request thereof; (ii) No more than two (2) depositions per party, provided however, the deposition(s) are to be completed within one (1) day; (iii) Compliance with the above shall be enforced by the arbitrator in accordance with California law;

(D) Each party shall have no longer than eight (8) hours to present its position. The entire hearing before the arbitrator shall not take longer than three (3) consecutive days;

(E) The award shall be made in writing no more than 30 days following the end of the proceeding. Judgment upon the award rendered by the arbitrator may be entered by any court having jurisdiction thereof.

To the fullest extent permitted by law, and except as required by applicable arbitration rules, each party shall bear its own attorneys' fees and costs in connection with the proceedings and shall share equally the fees and expenses of the arbitrator.

LIMITED RIGHT OF RESCISSION

If within one (1) year from the date of sale, the original buyer (a) gives written notice to us alleging that the identification of Authorship (as defined below) of such lot as set forth in the **BOLD TYPE** heading of the catalog description of such lot (as amended by any saleroom notices or verbal announcements during the sale) is not substantially correct based on a fair reading of the catalog (including the terms of any glossary contained therein), and (b) within 10 days after such notice returns the lot to us in the same condition as at the time of sale, and (c) establishes the allegation in the notice to our satisfaction (including by providing one or more written opinions by recognized experts in the field, as we may reasonably require), then the sale of such lot will be rescinded and, unless we have already paid to the consignor monies owed him in connection with the sale, the original purchase price will be refunded.

If, prior to receiving such notice from the original buyer alleging such defect, we have paid the consignor monies owed him in connection with the sale, we shall pay the original buyer the amount of our commissions, any other sale proceeds to which we are entitled and applicable taxes received from the buyer on the sale and make demand on the consignor to pay the balance of the original purchase price to the original buyer. Should the consignor fail to pay such amount promptly, we may disclose the identity of the consignor and assign to the original buyer our rights against the consignor with respect to the lot the sale of which is sought to be rescinded. Upon such disclosure and assignment, any liability of Bonhams as consignor's agent with respect to said lot shall automatically terminate.

The foregoing limited right of rescission is available to the original buyer only and may not be assigned to or relied upon

Conditions of sale - Continued

by any subsequent transferee of the property sold. The buyer hereby accepts the benefit of the consignor's warranty of title and other representations and warranties made by the consignor for the buyer's benefit. Nothing in this section shall be construed as an admission by us of any representation of fact, express or implied, obligation or responsibility with respect to any lot. THE BUYER'S SOLE AND EXCLUSIVE REMEDY AGAINST BONHAMS FOR ANY REASON WHATSOEVER IS THE LIMITED RIGHT OF RESCISSION DESCRIBED IN THIS SECTION.

"Authorship" means only the identity of the creator, the period, culture and source or origin of the lot, as the case may be, as set forth in the **BOLD TYPE** heading of the print catalog entry. The right of rescission does not extend to: (a) works of art executed before 1870 (unless these works are determined to be counterfeits created since 1870), as this is a matter of current scholarly opinion which can change; (b) titles, descriptions, or other identification of offered lots, which information normally appears in lower case type below the **BOLD TYPE** heading identifying the Authorship; (c) Authorship of any lot where it was specifically mentioned that there exists a conflict of specialist or scholarly opinion regarding the Authorship of the lot at the time of sale; (d) Authorship of any lot which as of the date of sale was in accordance with the then generally-accepted opinion of scholars and specialists regarding the same; or (e) the identification of periods or dates of creation in catalog descriptions which may be proven inaccurate by means of scientific processes that are not generally accepted for use until after publication of the catalog in which the property is offered or that were unreasonably expensive or impractical to use at the time of such publication.

LIMITATION OF LIABILITY

EXCEPT AS EXPRESSLY PROVIDED ABOVE, ALL PROPERTY IS SOLD "AS IS." NEITHER BONHAMS NOR THE CONSIGNOR MAKES ANY REPRESENTATION

OR WARRANTY, EXPRESS OR IMPLIED, AS TO THE MERCHANTABILITY, FITNESS OR CONDITION OF THE PROPERTY OR AS TO THE CORRECTNESS OF DESCRIPTION, GENUINENESS, ATTRIBUTION, PROVENANCE OR PERIOD OF THE PROPERTY OR AS TO WHETHER THE BUYER ACQUIRES ANY COPYRIGHTS OR OTHER INTELLECTUAL PROPERTY RIGHTS IN LOTS SOLD OR AS TO WHETHER A WORK OF ART IS SUBJECT TO THE ARTIST'S MORAL RIGHTS OR OTHER RESIDUAL RIGHTS OF THE ARTIST. THE BUYER EXPRESSLY ACKNOWLEDGES AND AGREES THAT IN NO EVENT SHALL BONHAMS BE LIABLE FOR ANY DAMAGES INCLUDING, WITHOUT LIMITATION, ANY COMPENSATORY, INCIDENTAL OR CONSEQUENTIAL DAMAGES. IN NO EVENT SHALL THE AGGREGATE LIABILITY OF BONHAMS AND ITS CONSIGNOR TO A PURCHASER EXCEED THE PURCHASE PRICE ACTUALLY PAID FOR A DISPUTED ITEM OF PROPERTY.

Seller's guide

SELLING AT AUCTION

Bonhams can help you every step of the way when you are ready to sell art, antiques and collectible items at auction. Our regional offices and representatives throughout the US are available to service all of your needs. Should you have any further questions, please visit our website at www.bonhams.com/us for more information or call our Client Services Department at +1 (323) 850 7500.

AUCTION ESTIMATES

The first step in the auction process is to determine the auction value of your property. Bonhams' world-renowned specialists will evaluate your special items at no charge and in complete confidence. You can obtain an auction estimate in many ways:

- Attend one of our Auction Evaluation Events held regularly at our galleries and in other major metropolitan areas. The updated schedule for Bonhams Auction Evaluation Events is available at www.bonhams.com/us.
- Call our Client Services Department to schedule a private appointment at one of our galleries. If you have a large collection, our specialists can travel, by appointment, to evaluate your property on site.
- Send clear photographs to us of each individual item, including item dimensions and other pertinent information with each picture. Photos should be sent to Bonhams' address in envelopes marked as "photo auction estimate". Alternatively, you can submit your request using our online form at www.bonhams.com/us. Digital images may be attached to the form. Please limit your images to no more than five (5) per item.

CONSIGNING YOUR PROPERTY

After you receive an estimate, you may consign your property to us for sale in the next appropriate auction. Our staff assists you throughout the process, arranging transportation of your items to our galleries (at the consignor's expense), providing a detailed inventory of your consignment, and reporting the prices realized for each lot. We provide secure storage for your property in our warehouses and all items are insured throughout the auction process. You will receive payment for your property approximately 35 days after completion of sale.

Sales commissions vary with the potential auction value of the property and the particular auction in which the property is offered. Please call us for commission rates.

PROFESSIONAL APPRAISAL SERVICES

Bonhams' specialists conduct insurance and fair market value appraisals for private collectors, corporations, museums, fiduciaries and government entities on a daily basis. Insurance appraisals, used for insurance purposes, reflect the cost of replacing property in today's retail market. Fair market value appraisals are used for estate, tax and family division purposes and reflect prices paid by a willing buyer to a willing seller.

When we conduct a private appraisal, our specialists will prepare a thorough inventory listing of all your appraised property by category. Valuations, complete descriptions and locations of items are included in the documentation.

Appraisal fees vary according to the nature of the collection, the amount of work involved, the travel distance, and whether the property is subsequently consigned for auction.

Our appraisers are available to help you anywhere and at any time. Please call our Client Services Department to schedule an appraisal.

ESTATE SERVICES

Since 1865, Bonhams has been serving the needs of fiduciaries – lawyers, trust officers, accountants and executors – in the disposition of large and small estates. Our services are specially designed to aid in the efficient appraisal and disposition of fine art, antiques, jewelry, and collectibles. We offer a full range of estate services, ranging from flexible financial terms to tailored accounting for heirs and their agents to world-class marketing and sales support.

For more information or to obtain a detailed Trust and Estates package, please visit our website at www.bonhams.com/us or contact our Client Services Department.

Buyer's guide

BIDDING & BUYING AT AUCTION

Whether you are an experienced bidder or an enthusiastic novice, auctions provide a stimulating atmosphere unlike any other. Bonhams previews and sales are free and open to the public. As you will find in these directions, bidding and buying at auction is easy and exciting. Should you have any further questions, please visit our website at www.bonhams.com or call our Client Services Department at +1 (323) 850 7500.

Catalogs

Before each auction we publish illustrated catalogs that include dates and times for previews and auctions. Our catalogs also provide descriptions and estimated values for each "lot." A lot may refer to a single item or to a group of items auctioned together. We offer our catalogs by subscription or by single copy. For information on subscribing to our catalogs, you may refer to the subscription form in this catalog, call our Client Services Department, or visit our website at www.bonhams.com/us.

Previews

Auction previews are your chance to inspect each lot prior to the auction. We encourage you to look closely and examine each object on which you may want to bid so that you will know as much as possible about it. Items are sold "as is" and with all faults; illustrations in our catalogs, website and other materials are provided for identification only. At the previews, our staff is always available to answer your questions and guide you through the auction process. Condition reports may be available upon request.

Estimates

Bonhams catalogs include estimates for each lot, exclusive of buyer's premium and tax. The estimates are provided as an approximate guide to current market value and should not be interpreted as a representation or prediction of actual selling prices. They are determined well in advance of a sale and are subject to revision. Please contact us should you have any questions about value estimates.

Reserves

All lots in a catalog are subject to a reserve unless otherwise indicated. The reserve is the minimum price that the seller is willing to accept for a lot. This amount is confidential and does not exceed the low estimated value.

BIDDING AT AUCTION

At Bonhams, you can bid in many ways: in person, via absentee bid, over the phone, or via Bonhams' online bidding facility. Absentee bids can be submitted in person, online, via fax or via email.

A valid Bonhams client account is required to participate in bidding activity. You can obtain registration information online, at the reception desk or by calling our Client Services Department.

By bidding at auction, whether in person or by agent, by absentee bid, telephone, online or other means, the buyer or bidder agrees to be bound by the Conditions of Sale.

Lots are auctioned in consecutive numerical order as they appear in the catalog. Bidding normally begins below the low estimate. The auctioneer will accept bids from interested parties present in the saleroom, from telephone bidders, and from absentee bidders who have left written bids in advance of the sale. The auctioneer may also execute bids on behalf of the consignor up to the amount of the reserve, but never above it.

We assume no responsibility for failure to execute bids for any reason whatsoever.

In Person

If you are planning to bid at auction, you will need to register at the reception desk in order to receive a numbered bid card. To place a bid, hold up your card so that the auctioneer can clearly see it. Decide on the maximum amount that you wish to pay, exclusive of buyer's premium and tax, and continue bidding until your bid prevails or you reach your limit. If you are the successful bidder on a lot, the auctioneer will acknowledge your paddle number and bid amount.

Absentee Bids

As a service to those wishing to place bids, we may at our discretion accept bids without charge in advance of sale by telephone, by facsimile or in writing on bidding forms available from us. "Buy" bids will not be accepted; all bids must state the highest bid price the bidder is willing to pay. Our auction staff will try to bid just as you would, with the goal of obtaining the

item at the lowest bid price possible. In the event identical bids are submitted, the earliest bid submitted will take precedence. Absentee bids shall be executed in competition with other auction participants. A friend or agent may place bids on your behalf, provided that we have received your written authorization prior to the sale. Absentee bid forms are available in our catalogs, online at www.bonhams.com/us, and at our San Francisco, Los Angeles and New York galleries.

By Telephone

Under special circumstances, we can arrange for you to bid by telephone. To arrange for a telephone bid, please contact our Client Services Department a minimum of 24 hours prior to the sale.

Online

Web users may place absentee bids online from anywhere in the world. To bid online, please visit our website at www.bonhams.com/us.

We are pleased to make our live online bidding facility available to bidders in this sale.

Additional terms and conditions of sale relating to online bidding will apply. Please see www.bonhams.com/25331 or contact the Client Services Department to obtain information and learn how you can register and bid online in this sale.

Bid Increments

Bonhams generally uses the following increment multiples as bidding progresses:

\$50-200	by \$10s
\$200-500	by \$20/50/80s
\$500-1,000	by \$50s
\$1,000-2,000	by \$100s
\$2,000-5,000	by \$200/500/800s
\$5,000-10,000	by \$500s
\$10,000-20,000	by \$1,000s
\$20,000-50,000	by \$2,000/5,000/8,000s
\$50,000-100,000	by \$5,000s
\$100,000-200,000	by \$10,000s
above \$200,000	at auctioneer's discretion

The auctioneer may split or reject any bid at any time at his or her discretion as outlined in the Conditions of Sale.

Currency Converter

Solely for the convenience of bidders, a currency converter may be provided at Bonhams sales. The rates quoted for conversion of other currencies to U.S. Dollars are indications only and should not be relied upon by a bidder, and neither Bonhams nor its agents shall be responsible for any errors or omissions in the operation or accuracy of the currency converter.

Buyer's Premium

A buyer's premium is added to the winning bid price of each individual lot purchased, at the rates set forth in the Conditions of Sale. The winning bid price plus the premium constitute the purchase price for the lot. Applicable sales taxes are computed based on this figure, and the total becomes your final purchase price.

Unless specifically illustrated and noted, fine art frames are not included in the estimate or purchase price. Bonhams accepts no liability for damage or loss to frames during storage or shipment.

All sales are final and subject to the Conditions of Sale found in our catalogs, on our website, and available at the reception desk.

Payment

All buyers are asked to pay and pick up by 3pm on the business day following the auction. Payment may be made to Bonhams by cash, checks drawn on a U.S. bank, money order, wire transfer, or by Visa, MasterCard, American Express or Discover credit or charge card or debit card. All items must be paid for within 5 business days of the sale. Please note that payment by personal or business check may result in property not being released until purchase funds clear our bank.

Sales Tax

Residents of states listed in Paragraph 1 of the Conditions of Sale must pay applicable sales tax. Other state or local taxes (or compensation use taxes) may apply. Sales tax will be automatically added to the invoice unless a valid resale number has been furnished or the property is shipped via common carrier to destinations outside the states listed in

the Conditions of Sale. If you wish to use your resale license please contact Cashiers for our form.

Bonhams can accommodate shipping for certain items. Please contact our Cashiers Department for more information or to obtain a quote. Refer to Conditions of Sale for special terms governing the shipment of Arms and Wine. Shipments are made during weekday business hours up to four weeks after payment is received. Carriers are not permitted to deliver to P.O. Boxes.

International buyers are responsible for all import/export customs duties and taxes. An invoice stating the actual purchase price(s) will accompany all international purchases.

Simultaneous sale property collection notice:

If this sale previews in multiple cities, please see the title page for details regarding final location of property for collection.

Auction Results

Auction results are usually available on the next business day following the sale or online at www.bonhams.com/us.

Bonhams Specialist Departments

19th Century Paintings

London
Charles O' Brien
+44 20 7468 8360
New York
Madalina Lazen
+1 212 644 9108

20th Century British Art

London
Matthew Bradbury
+44 20 7468 8295

20th Century Fine Art

San Francisco
Sonja Moro
+1 415 694 9002

Aboriginal Art

Australia
Francesca Cavazzini
+61 2 8412 2222

African, Oceanic & Pre-Columbian Art

Los Angeles
Fredric W. Backlar
+1 323 436 5416 •

American Paintings

New York
Jennifer Jacobsen
+1 917 206 1699

Antiquities

London
Francesca Hickin
+44 20 7468 8226

Antique Arms & Armour

London
David Williams
+44 20 7393 3807

Art Collections, Estates & Valuations

London
Harvey Cammell
+44 (0) 20 7468 8340
New York
Sherri Cohen
+1 917 206 1671
Los Angeles
Leslie Wright
+1 323 436 5408
Joseph Francaviglia
+1 323 436 5443
Lydia Ganley
+1 323 436 4496
San Francisco
Victoria Richardson
+1 415 503 3207
Celeste Smith
+1 415 503 3214

Australian Art

Australia
Merryn Schriever
+61 2 8412 2222 Alex Clark
+61 3 8640 4088

Australian Colonial Furniture and Australiana

+61 2 8412 2222

Books, Maps & Manuscripts

London
Matthew Haley
+44 20 7393 3817
New York
Ian Ehling
+1 212 644 9094 Darren Sutherland
+1 212 461 6531

Los Angeles

Catherine Williamson
+1 323 436 5442

San Francisco

Adam Stackhouse
+1 415 503 3266

British & European Glass

London
Fergus Gambon
+44 20 7468 8245

British Ceramics

London
Fergus Gambon
+44 20 7468 8245

California & Western Paintings & Sculpture

Los Angeles
Scot Levitt
+1 323 436 5425
Kathy Wong
+1 323 436 5415
San Francisco
Aaron Bastian
+1 415 503 3241

Carpets

London
Helena Gumley-Mason
+44 20 8393 2615

Chinese & Asian Art

London
Asaph Hyman
+44 20 7468 5888
Rosangela Assennato
+44 20 7393 3883
Edinburgh
Ian Glennie
+44 131 240 2299
New York
Bruce MacLaren
+1 917 206 1677
Los Angeles
Rachel Du
+1 323 436 5587
San Francisco
Dessa Goddard
+1 415 503 3333
Hong Kong
Xibo Wang
+852 3607 0010
Sydney
Yvett Klein
+61 2 8412 2231

Chinese Paintings

Hong Kong
Iris Miao,
+852 3607 0011

Clocks

London
James Stratton
+44 20 7468 8364
New York
Jonathan Snellenburg
+1 212 461 6530

Coins & Medals

London
John Millensted
+44 20 7393 3914
Los Angeles
Paul Song
+1 323 436 5455

Entertainment Memorabilia

London
Katherine Schofield
+44 20 7393 3871
Los Angeles
Catherine Williamson
+1 323 436 5442
Dana Hawkes
+1 978 283 1518

European Ceramics

London
Sebastian Kuhn
+44 20 7468 8384

European Paintings

London
Charles O' Brien
+44 20 7468 8360
New York
Madalina Lazen
+1 212 644 9108
Los Angeles
Mark Fisher
+1 323 436 5488
Rocco Rich
+1 323 436 5410

European Sculptures & Works of Art

London
Michael Lake
+44 20 8963 6813

Furniture and Decorative Art

London
Thomas Moore
+44 20 8963 2816
Los Angeles
Angela Past
+1 323 436 5422
Anna Hicks
+1 323 436 5463
San Francisco
Jeffrey Smith
+1 415 215 7385

Greek Art

London
Anastasia Orfanidou
+44 20 7468 8356

Golf Sporting

Memorabilia
Edinburgh
Kevin McGimpsey
Hamish Wilson
+44 131 240 0916

Irish Art

London
Penny Day
+44 20 7468 8366

Impressionist & Modern Art

London
India Phillips
+44 20 7468 8328
New York
Caitlyn Pickens
+1 212 644 9135
Los Angeles
Kathy Wong
+1 323 436 5415

Indian, Himalayan & Southeast Asian Art

New York
Mark Rasmussen
+1 917 206 1688
Hong Kong
Edward Wilkinson
+852 2918 4321

Islamic & Indian Art

London
Oliver White
+44 20 7468 8303

Japanese Art

London
Suzannah Yip
+44 20 7468 8368
New York
Jeff Olson
+1 212 461 6516

Jewellery

London
Jean Ghika
+44 20 7468 8282
Emily Barber
+44 20 7468 8284
New York
Brett O'Connor
+1 212 461 6525
Caroline Morrissey
+1 212 644 9046
Camille Barbier
+1 212 644 9035
Los Angeles
Emily Waterfall
+1 323 436 5426
San Francisco
Shannon Beck
+1 415 503 3306
Hong Kong
Paul Redmayne
+852 3607 0006

Marine Art

London
Veronique Scorer
+44 20 7393 3962

Mechanical Music

London
Jon Baddeley
+44 20 7393 3872

**Modern & Contemporary
African Art**

London
Giles Peppiatt
+ 44 20 7468 8355
New York
Hayley Grundy
+1 917 206 1624

**Modern & Contemporary
Middle Eastern Art**

London
Nima Sagharchi
+44 20 7468 8342

**Modern & Contemporary
South Asian Art**

London
Tahmina Ghaffar
+44 207 468 8382

**Modern Decorative
Art + Design**

London
Mark Oliver
+44 20 7393 3856
New York
Benjamin Walker
+1 212 710 1306
Dan Tolson
+1 917 206 1611
Los Angeles
Jason Stein
+1 323 436 5466

Motor Cars

London
Tim Schofield
+44 20 7468 5804
New York
Rupert Banner
+1 212 461 6515
Eric Minoff
1 917 206 1630
Evan Ide
+1 917 340 4657
Los Angeles
Jakob Greisen
+1 415 503 3284
Michael Caimano
+1 929 666 2243
San Francisco
Mark Osborne
+1 415 503 3353
Europe
Phillip Kantor
+32 476 879 471

Automobilia

London
Toby Wilson
+44 20 8963 2842
Adrian Pipiros
+44 20 8963 2840

Motorcycles

London
Ben Walker
+44 20 8963 2819
James Stensel
+44 20 8963 2818
Los Angeles
Craig Mallery
+1 323 436 5470

Museum Services

San Francisco
Laura King Pfaff
+1 415 503 3210

Native American Art

Los Angeles
Ingmars Lindbergs
+1 415 503 3393
Kim Jarand
+1 323 436 5430

Natural History

Los Angeles
Claudia Florian
+1 323 436 5437
Thomas E. Lindgren
+1 310 469 8567 •

Old Master Pictures

London
Andrew Mckenzie
+44 20 7468 8261
Los Angeles
Mark Fisher
+1 323 436 5488

Orientalist Art

London
Charles O'Brien
+44 20 7468 8360

Photography

New York
Laura Paterson
+1 917 206 1653
Los Angeles & San Francisco
Morisa Rosenberg
+1 323 436 5435
+1 415 503 3259

**Post-War and
Contemporary Art**

London
Ralph Taylor
+44 20 7447 7403
New York
Muys Sniijders,
+212 644 9020
Jacqueline Towers-Perkins,
+1 212 644 9039
Lisa De Simone,
+1 917 206 1607
Los Angeles
Sharon Squires
+1 323 436 5404
Laura Bjorstad
+1 323 436 5446

Prints and Multiples

London
Lucia Tro Santafe
+44 20 7468 8262
New York
Deborah Ripley
+1 212 644 9059
Los Angeles
Morisa Rosenberg
+1 323 447 9374

Russian Art

London
Daria Khristova
+44 20 7468 8334
New York
Yelena Harbick
+1 212 644 9136

Scientific Instruments

London
Jon Baddeley
+44 20 7393 3872
New York
Jonathan Snellenburg
+1 212 461 6530

Scottish Pictures

Edinburgh
Chris Brickley
+44 131 240 2297

Silver & Gold Boxes

London
Ellis Finch
+44 20 7393 3973

Sporting Guns

London
Patrick Hawes
+44 20 7393 3815

Space History

San Francisco
Adam Stackhouse
+1 415 503 3266

Travel Pictures

London
Veronique Scorer
+44 20 7393 3962

**Watches &
Wristwatches**

London
Jonathan Darracott
+44 20 7447 7412
New York
Jonathan Snellenburg
+1 212 461 6530
Hong Kong
Tim Bourne
+852 3607 0021

Whisky

Edinburgh
Martin Green
+44 131 225 2266
Hong Kong
Daniel Lam
+852 2918 4321

Wine

London
Richard Harvey
+44 20 7468 5811
San Francisco
Christine Ballard
+1 415 503 3221
Hong Kong
Daniel Lam
+852 2918 4321

Client Services Departments**U.S.A.****San Francisco**

(415) 861 7500
(415) 861 8951 fax
Monday - Friday, 9am to 5pm

Los Angeles

(323) 850 7500
(323) 850 6090 fax
Monday - Friday, 9am to 5pm

New York

(212) 644 9001
(212) 644 9009 fax
Monday - Friday, 9am to 5pm

Toll Free

(800) 223 2854

U.K.

Monday to Friday 8.30 to 6.00
+44 (0) 20 7447 7447

Bids

+44 (0) 20 7447 7447
+44 (0) 20 7447 7401 fax
To bid via the internet please visit
bonhams.com

• Indicates independent contractor

Bonhams Global Network

International Salerooms

London

101 New Bond Street
London W1S 1SR
+44 20 7447 7447
+44 20 7447 7400 fax

New York

580 Madison Avenue
New York, NY 10022
+1 (212) 644 9001
+1 (212) 644 9007 fax

Hong Kong

Suite 2001
One Pacific Place
88 Queensway
Admiralty
Hong Kong
+852 2918 4321
+852 2918 4320 fax

London

Montpelier Street London
SW7 1HH
+44 20 7393 3900
+44 20 7393 3905 fax

Offices and Associated Companies

Africa

Nigeria

Neil Coventry
+234 (0) 8110 033 792
+27 (0) 7611 20171
neil.coventry@
bonhams.com

South Africa - Johannesburg

Penny Culverwell
+27 (0) 71 342 2670
penny.culverwell@
bonhams.com

Australia

Sydney

97-99 Queen Street,
Woollahra, NSW 2025
Australia
+61 (0) 2 8412 2222
+61 (0) 2 9475 4110 fax
info.aus@bonhams.com

Melbourne

Como House
Como Avenue
South Yarra
Melbourne VIC 3141
Australia
+61 (0) 3 8640 4088
+61 (0) 2 9475 4110 fax
info.aus@bonhams.com

Asia

Beijing

Vivian Zhang
Unit S102A, Beijing
Lufthansa Center,
50 Liangmaqiao Road,
Chaoyang District,
Beijing 100125, China
+86 (0) 10 8424 3188
beijing@bonhams.com

Singapore

Bernadette Rankine
11th Floor, Wisma Atria
435 Orchard Road
Singapore 238877
+65 (0) 6701 8038
+65 (0) 6701 8001 fax
bernadette.rankine@
bonhams.com

Taiwan

Jenny Tsai
37th Floor,
Taipei 101 Tower
No. 7 Xinyi Road,
Section 5
Taipei, 100
+886 2 8758 2898
+886 2 8758 2897 fax
taiwan@bonhams.com

Europe

Austria

Thomas Kamm
thomas.kamm@
bonhams.com
+49 900 89 2420 5812
austria@bonhams.com

Belgium

Christine De Schaetzen
christine.deschaetzen@
bonhams.com
Boulevard Saint
Michel 101
1040 Brussels
+32 (0) 2 736 5076
belgium@bonhams.com

France

Catherine Yaiche
catherine.yaiche@
bonhams.com
4 rue de la Paix
75002 Paris
+33 (0) 1 42 61 10 10
paris@bonhams.com

Germany - Cologne

Katharina Schmid
katharina.schmid@
bonhams.com
+49 (0) 221 9865 3419
+49 (0) 157 9234 6717
cologne@bonhams.com

Germany - Hamburg

Marie Becker Lingenthal
marie.beckerlingenthal@
bonhams.com
+49 (0) 17 4236 0022
hamburg@
bonhams.com

Germany - Munich

Thomas Kamm
thomas.kamm@
bonhams.com
Maximilianstrasse 52
80538 Munich
+49 (0) 89 2420 5812
munich@bonhams.com

Germany - Stuttgart

Katharina Schmid
katharina.schmid@
bonhams.com
Neue Brücke 2
New Bridge Offices
70173 Stuttgart
+49 (0) 711 2195 2640
+49 (0) 157 9234 6717
stuttgart@bonhams.com

Greece

7 Neofytou Vamva
Street
Athens 10674
+30 (0) 210 3636 404
athens@bonhams.com

Ireland

Kieran O'Boyle
kieran.oboyle@
bonhams.com
31 Molesworth Street
Dublin 2
+353 (0) 1 602 0990
ireland@bonhams.com

Italy - Milan

Luca Curradi
luca.curradi@
bonhams.com
Via Boccaccio 22
20123 Milano
+39 0 2 4953 9020
milan@bonhams.com

Italy - Rome

Emma Dalla Libera
emma.dallalibera@
bonhams.com
Via Sicilia 50
00187 Roma
+39 06 485 900
rome@bonhams.com

The Netherlands

Koen Samson
koen.samson@
bonhams.com
De Lairessestraat 154
1075 HL Amsterdam
+31 (0) 20 67 09 701
amsterdam@
bonhams.com

Portugal

Filipa De Andrade
filipa.deandrade@
bonhams.com
Rua Bartolomeu Dias
no160. 1o
Belem
1400-031 Lisbon
+351 218 293 291
portugal@bonhams.com

Spain - Barcelona & North

Teresa Ybarra
teresa.ybarra@
bonhams.com
+34 930 156 686
+34 680 347 606
barcelona@
bonhams.com

Spain - Madrid

Johann Leibbrandt
johann.leibbrandt@
bonhams.com
Núñez de Balboa
no 4-1C
28001 Madrid
+34 915 78 17 27

Switzerland - Geneva

Live Gallone Moeller
livie.gallonemoeller@
bonhams.com
Rue Etienne-Dumont 10
1204 Geneva
+41 22 300 3160
geneva@bonhams.com

Switzerland - Zurich

Andrea Bodmer
andrea.bodmer@
bonhams.com
Dreikönigstrasse 31a
8002 Zürich
+41 44 281 9535
zurich@bonhams.com

North America

USA

Representatives:

Arizona

Terri Adrian-Hardy
terri.hardy@
bonhams.com
+1 (602) 859 1843
arizona@bonhams.com

California

Central Valley
David Daniel
david.daniel@
bonhams.com
+1 (916) 364 1645
nevada@bonhams.com

California - Palm Springs

Brooke Sivo
brooke.sivo@
bonhams.com
+1 (760) 350 4255
palm Springs@
bonhams.com

California - San Diego

Brooke Sivo
brooke.sivo@
bonhams.com
+1 (760) 567 1744
sandiego@
bonhams.com

Colorado

Lance Vigil
lance.vigil@
bonhams.com
+1 (720) 355 3737
colorado@
bonhams.com

Florida

April Matteini
april.matteini@
bonhams.com
+1 (305) 978 2459
Alexis Butler
alexis.butler@
bonhams.com
+1 (305) 878 5366
miami@bonhams.com

Georgia

Mary Moore Bethea
mary.bethea@
bonhams.com
+1 (404) 842 1500
georgia@bonhams.com

Illinois & Midwest

Natalie B. Waechter
natalie.waechter@
bonhams.com
+1 (773) 267 3300
Shawn Marsh
shawn.marsh@
bonhams.com
+1 (773) 680 2881
chicago@bonhams.com

Massachusetts & New England

Amy Corcoran
amy.corcoran@
bonhams.com
+1 (617) 742 0909
boston@bonhams.com

Nevada

David Daniel
david.daniel@
bonhams.com
+1 (775) 831 0330
nevada@bonhams.com

New Mexico

Terri Adrian-Hardy
terri.hardy@
bonhams.com
+1 (602) 859 1843
newmexico@
bonhams.com

Oregon & Idaho

Sheryl Acheson
sheryl.acheson@
bonhams.com
+1 (971) 727 7797
oregon@bonhams.com

Edinburgh

22 Queen Street
Edinburgh
EH2 1JX
+44 131 225 2266
+44 131 220 2547 fax

Los Angeles

7601 W. Sunset Boulevard
Los Angeles
CA 90046
+1 (323) 850 7500
+1 (323) 850 6090 fax

San Francisco

220 San Bruno Avenue
San Francisco
CA 94103
+1 (415) 861 7500
+1 (415) 861 8951 fax

Texas - Dallas

Mary Holm
mary.holm@
bonhams.com
+1 (214) 557 2716
dallas@bonhams.com

Texas - Houston

Lindsay Davis
lindsay.davis@
bonhams.com
+1 (713) 855 7452
texas@bonhams.com

Virginia

Gertraud Hechl
gertraud.hechl@
bonhams.com
+1 (202) 422 2733
virginia@
bonhams.com

**Washington
& Alaska**

Heather O'Mahony
heather.omahony@
bonhams.com
+1 (206) 566 3913
seattle@
bonhams.com

**Washington DC
Mid-Atlantic Region**

Gertraud Hechl
gertraud.hechl@
bonhams.com
+1 (202) 422 2733
washingtonDC@
bonhams.com

Canada**Toronto, Ontario**

Kristin Kearney
340 King St East
2nd floor, Office 213
Toronto ON
M5A 1 KB
kristin.kearney@
bonhams.com
+1 (416) 462 9004
info.ca@
bonhams.com

Montreal, Quebec

+1 (514) 209 2377
info.ca@
bonhams.com

Middle East**Israel**

Joslyne Halibard
joslyne.halibard@
bonhams.com
+972 (0) 54 553 5337

**United
Kingdom****South East
England****Guildford**

Millmead,
Guildford,
Surrey GU2 4BE
+44 1483 504 030
guildford@
bonhams.com

Isle of Wight

+44 1273 220 000
isleofwight@
bonhams.com

Representative:

Brighton & Hove

Tim Squire-Sanders
+44 1273 220 000
hove@bonhams.com

West Sussex

+44 (0) 1273 220 000
sussex@
bonhams.com

**South West
England****Bath**

Queen Square House
Charlotte Street
Bath, BA1 2LL
+44 1225 788 988
bath@bonhams.com

Cornwall - Truro

36 Lemon Street
Truro
Cornwall
TR1 2NR
+44 1872 250 170
truro@bonhams.com

Exeter

The Lodge
Southernhay West
Exeter, Devon
EX1 1JG
+44 1392 425 264
exeter@bonhams.com

Tetbury

Eight Bells House
14 Church Street
Tetbury
Gloucestershire
GL8 8JG
+44 1666 502 200
tetbury_office@
bonhams.com

Representatives:

Dorset

Matthew Lacey
+44 1935 815 271

**East Anglia and
Bury St. Edmunds**
Michael Steel
+44 1284 716 190
bury@bonhams.com

Norfolk

The Market Place
Reepham
Norfolk, NR10 4JJ
+44 1603 871 443
norfolk@
bonhams.com

Midlands**Knowle**

The Old House
Station Road
Knowle, Solihull
West Midlands
B93 0HT
+44 1564 776 151
knowle@
bonhams.com

Oxford

Banbury Road
Shipton on Cherwell
Kidlington OX5 1JH
+44 1865 853 640
oxford@
bonhams.com

Bonhams MPH
The Guard House
Bicester Heritage
Bicester, Oxfordshire
OX26 5HA
+44 1869 229 477
mph@bonhams.com

**Yorkshire & North
East England****Leeds**

The West Wing
Bowcliffe Hall
Bramham
Leeds, LS23 6LP
+44 113 234 5755
leeds@bonhams.com

North West England**Chester**

2 St Johns Court
Vicars Lane
Chester, CH1 1QE
+44 1244 313 936
chester@
bonhams.com

Manchester

The Stables
213 Ashley Road
Hale, WA15 9TB
+44 161 927 3822
manchester@
bonhams.com

Channel Islands**Jersey**

La Chasse
La Rue de la Vallee
St Mary
Jersey, JE3 3DL
+44 1534 722 441
jersey@bonhams.com

Representative:

Guernsey

+44 1481 722 448
guernsey@
bonhams.com

Scotland**Bonhams West
of Scotland**

Kirkhill House
Broom Road East
Newton Mearns
Glasgow, G77 5LL
+44 141 223 8866
glasgow@
bonhams.com

Wales

Representatives:

Cardiff

Jeff Muse
+44 2920 727 980
cardiff@bonhams.com

Auction Registration Form

(Attendee / Absentee / Online / Telephone Bidding)

Please circle your bidding method above.

--	--	--	--

Paddle number (for office use only)

General Notice: This sale will be conducted in accordance with Bonhams Conditions of Sale, and your bidding and buying at the sale will be governed by such terms and conditions. Please read the Conditions of Sale in conjunction with the Buyer's Guide relating to this sale and other published notices and terms relating to bidding. Payment by personal or business check may result in your property not being released until purchase funds clear our bank. Checks must be drawn on a U.S. bank.

Notice to Absentee Bidders: In the table below, please provide details of the lots on which you wish to place bids at least 24 hours prior to the sale. Bids will be rounded down to the nearest increment. Please refer to the Buyer's Guide in the catalog for further information relating to instructions to Bonhams to execute absentee bids on your behalf. Bonhams will endeavor to execute bids on your behalf but will not be liable for any errors or non-executed bids.

Notice to First Time Bidders: New clients are requested to provide photographic proof of ID - passport, driving license, ID card, together with proof of address - utility bill, bank or credit card statement etc. Corporate clients should also provide a copy of their articles of association / company registration documents, together with a letter authorizing the individual to bid on the company's behalf. Failure to provide this may result in your bids not being processed. For higher value lots you may also be asked to provide a bankers reference.

Notice to online bidders; If you have forgotten your username and password for www.bonhams.com, please contact Client Services.

If successful

- I will collect the purchases myself
- Please contact me with a shipping quote (if applicable)
- I will arrange a third party to collect my purchase(s)

Please email or fax the completed Registration Form and requested information to:

Bonhams Client Services Department
 7601 W. Sunset Blvd
 Los Angeles, California 90046
 Tel +1 (323) 850 7500
 Fax +1 (323) 850 6090
bids.us@bonhams.com

Bonhams

Sale title: California Jewels		Sale date: Tuesday September 10, 2019	
Sale no. 25331		Sale venue: Los Angeles	
General Bid Increments:			
\$10 - 200by 10s		\$10,000 - 20,000by 1,000s	
\$200 - 500by 20 / 50 / 80s		\$20,000 - 50,000by 2,000 / 5,000 / 8,000s	
\$500 - 1,000by 50s		\$50,000 - 100,000by 5,000s	
\$1,000 - 2,000by 100s		\$100,000 - 200,000by 10,000s	
\$2,000 - 5,000by 200 / 500 / 800s		above \$200,000at the auctioneer's discretion	
\$5,000 - 10,000by 500s		The auctioneer has discretion to split any bid at any time.	
Customer Number		Title	
First Name		Last Name	
Company name (to be invoiced if applicable)			
Address			
City		County / State	
Post / Zip code		Country	
Telephone mobile		Telephone daytime	
Telephone evening		Fax	
Telephone bidders: indicate primary and secondary contact numbers by writing ① or ② next to the telephone number.			
E-mail (in capitals) _____			
By providing your email address above, you authorize Bonhams to send you marketing materials and news concerning Bonhams and partner organizations. Bonhams does not sell or trade email addresses.			
I am registering to bid as a private client <input type="checkbox"/>		I am registering to bid as a trade client <input type="checkbox"/>	
Resale: please enter your resale license number here _____ We may contact you for additional information.			

SHIPPING	
Shipping Address (if different than above):	
Address: _____	Country: _____
City: _____	Post/ZIP code: _____

Please note that all telephone calls are recorded.

Type of bid (A-Absentee, T-Telephone)	Lot no.	Brief description (In the event of any discrepancy, lot number and not lot description will govern.) If you are bidding online there is no need to complete this section.	MAX bid in US\$ (excluding premium and applicable tax) Emergency bid for telephone bidders only*

You instruct us to execute each absentee bid up to the corresponding bid amount indicated above.

* Emergency Bid: A maximum bid (exclusive of Buyer's Premium and tax) to be executed by Bonhams only if we are unable to contact you by telephone or should the connection be lost during bidding.

BY SIGNING THIS FORM YOU AGREE THAT YOU HAVE READ AND UNDERSTAND OUR CONDITIONS OF SALE AND SHALL BE LEGALLY BOUND BY THEM, AND YOU AGREE TO PAY THE BUYER'S PREMIUM, ANY APPLICABLE TAXES, AND ANY OTHER CHARGES MENTIONED IN THE BUYER'S GUIDE OR CONDITIONS OF SALE. THIS AFFECTS YOUR LEGAL RIGHTS.	
Your signature: _____	Date: _____





Bonhams
7601 W. Sunset Boulevard
Los Angeles, California 90046

+1 323 850 7500
bonhams.com

AUCTIONEERS SINCE 1793